



SMARTDIGIT



For “NEWTON” electronic labels

SOLUM
Solution provider.

In this catalog you will find the widest variety of accessories designed specifically for the “NEWTON ESL SOLUM”

All the accessories are specifically designed to be applied with each electronic label model.

ESL ACCESSORIES



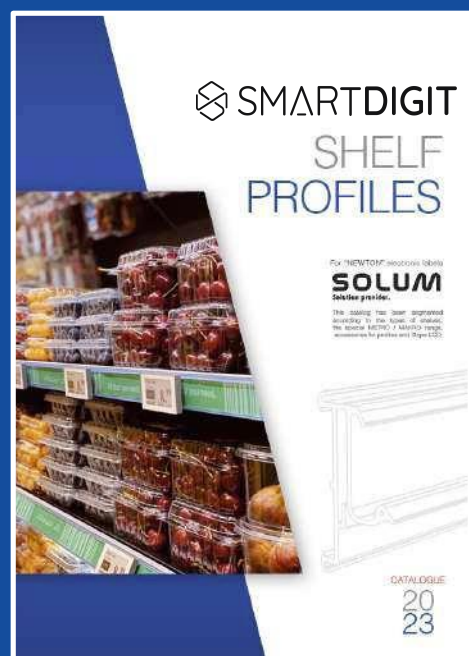
CATALOGUE

20
23



CATALOGUES

See our “supports” and “shelf profiles” catalogs, where you will find the widest assortment of items designed specifically for solum newton electronic labels.



SHELF PROFILES

Our catalog represents a large assortment of profiles for the different types of shelves on the market.

If the profile you need is not in this catalog, we can develop it in a short period of time.

We keep a permanent stock of all referenced models in lengths of 985 and 1315 mm and in transparent and black COLORS.

All our profiles are made of a single piece; that is, they are inserted directly into the front of the shelf without requiring any assembly or other manipulations.



SUPPORTS

In this catalog you will find the widest assortment of supports designed specifically for the “NEWTON ESL SOLUM”.

All holders are specifically designed for your application with each electronic tag model.

Most have inserts that, in combination with our accessories, allow each label model to be displayed in different positions to adapt to any type of furniture and surface, adapting to any situation that you need in your store.

In cases where these supports come into contact with food, the materials with which they have been manufactured are special for food use.

If you do not find the support you need, contact us and we will develop it in the shortest possible time.

INDEX

ACCESSORIES OVA FOR NEWTON ELECTRONIC LABELS

In this catalog you will find the widest variety of accessories designed specifically for the “NEWTON ESL SOLUM”.

All the accessories are specifically designed to be applied with each electronic label model.

Most of them have inserts that, in combination with our supports, allow each label model to be displayed in different positions so that they adapt to any type of furniture or surface, adapting to any situation you need in your business.

In cases where these accessories come into contact with food, the materials with which they have been manufactured are especially for food use.

If you do not find the product you need, contact us and we will develop it in the shortest possible time.

PAGE	
06	Inclined support for Solum 6.0 Labels and 7.5 horizontal and vertical position
08	Magnetic clip with 2 mm neodymium magnet
10	Clip to hang with wire or cable
12	Suction cup clip front position
14	Suction cup clip back position
16	Hanging hook for rods up to ø 8 mm Hanging hook for rods up to ø 12 mm
18	Hanging hook universal ovl model
19	Cross hanging hook for rods from ø 3 to 6 mm cho model 3.6 Cross hanging hook for rods from ø 5 to 8 mm cho modelo 5.8
20	Boomerang model support for solum labels 1.6, 2.2, 2.6, 2.7 And 2.9. 35 Mm bar
21	Boomerang model support for solum labels 1.6, 2.2, 2.6, 2.7 And 2.9. Bar of 55 mm bar
22	Boomerang model support for solum labels 1.6, 2.2, 2.6, 2.7, 2.9 And 4.2 Bar of 110 mm bar
24	Support and hooks for hanging solum 11.6 Labels on over-head rail
25	Connection piece to join two sections of aluminum overhead profile
26	Profile for hanging large format labels
28	Angular connector clip Stand clip to adjust the inclination of the labels
29	Tilt regulator with rods for supports For esl solum 6.0 And 7.5 Standard size

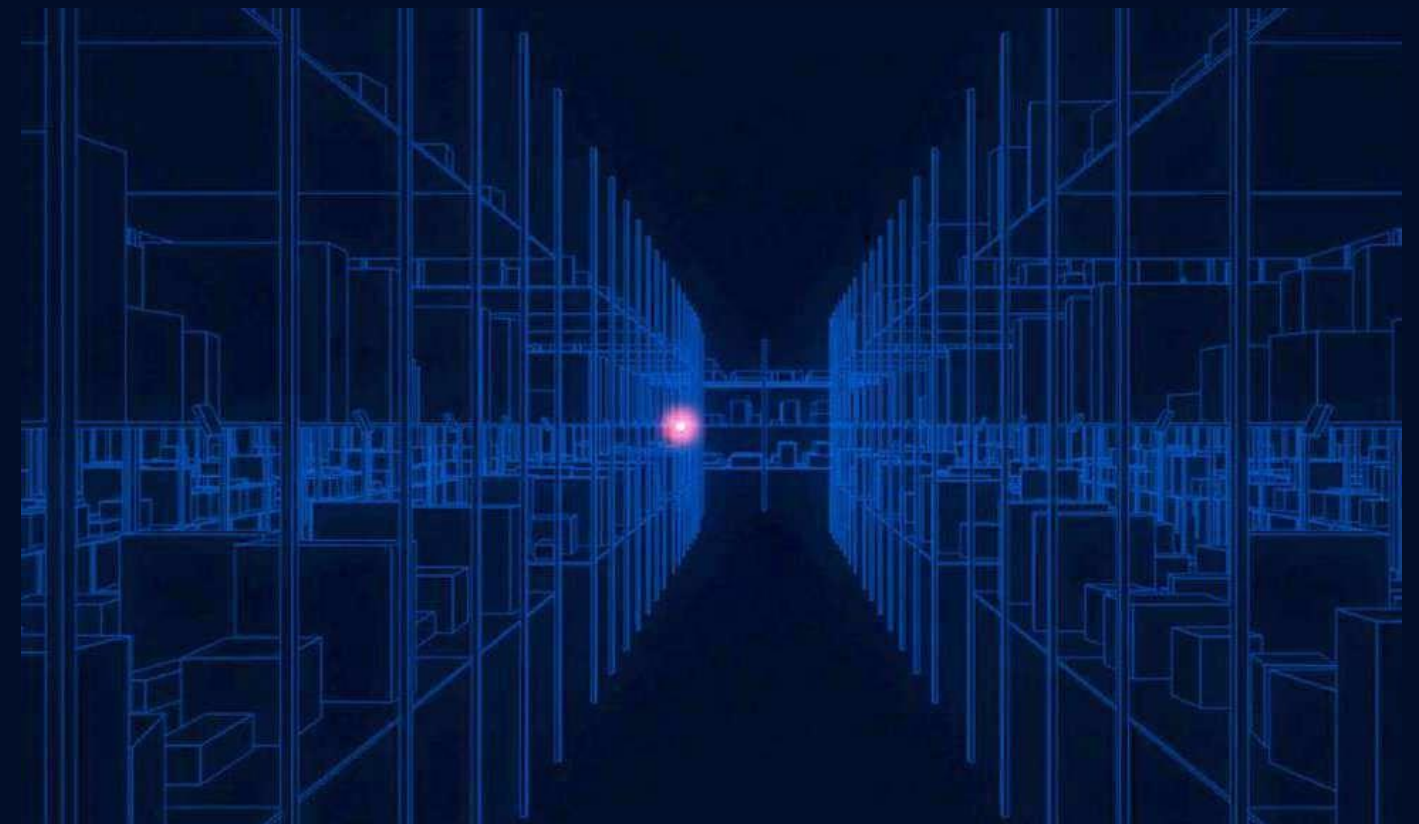
INDEX

ACCESSORIES OVA
FOR NEWTON
ELECTRONIC LABELS

- 30 Double connecting rods
Base for double connected rods
- 31 Base with tilting bar and adjustable height
- 32 Metal base with fixed bar and adjustable height
- 33 Metal base with telescopic bar
- 34 Base with adjustable slope for small format supports
- 36 Edge clip
- 36 Edge clip with angular connector clip
- 37 Clip for tubes and rods of \varnothing 5, 10, 15 and 30 mm
- 38 Clip for rods and rod hooks from \varnothing 4 to 6 mm
- 39 Clip for shelves from 8 to 18 mm thick
- 40 Clip for glass shelves from 8 to 10 mm thick with anti-slip rubber
- 41 Clips for shelves from 8 to 18 mm width
- 42 Universal clip for shelves 5 to 30 mm thick
- 43 Universal clip to place promotional supplements
2-Position connector with strong grip adhesive
- 44 1-Position connector with foamed adhesive
Electronic label remover tool
- 45 Hanging hook with 9 mm connector
- 46 Hanging hook for pipes up to \varnothing 20 mm with 9 mm connector
- 47 Swing clip for tegometall shelves with 9 mm connector
- 48 Double joint gripper
- 49 Omniclipper® model gripper
- 50 Unniclipper® model gripper with rotating and adjustable rod
- 51 Unniclipper® model gripper with rotating and adjustable tube
with device for supports with inserts
- 52 Gripper for boxes and baskets up to 15 mm thick with rotating
and adjustable rod
- 53 Gripper for boxes and baskets up to 15 mm thick
With device for supports with inserts
- 54 Magnum model telescopic tube
With extendable bar from 1000 to 1900 mm
- 55 Nemo model telescopic tube with extendable bar with device
for supports with inserts
Metal bases for nemo telescopic tube
- 56 Promo system

Newton Localization System

Newton incorporates its own label positioning system that makes it easier for Managers, staff and customers to find the right location of a product.



**The most competitive solution in terms of costs,
as you do not need any additional infrastructure or a different server.**

**Now, it's easier for managers and staff to navigate and locate what products need
to be replenished.**

Customers can locate the product from their mobile devices.



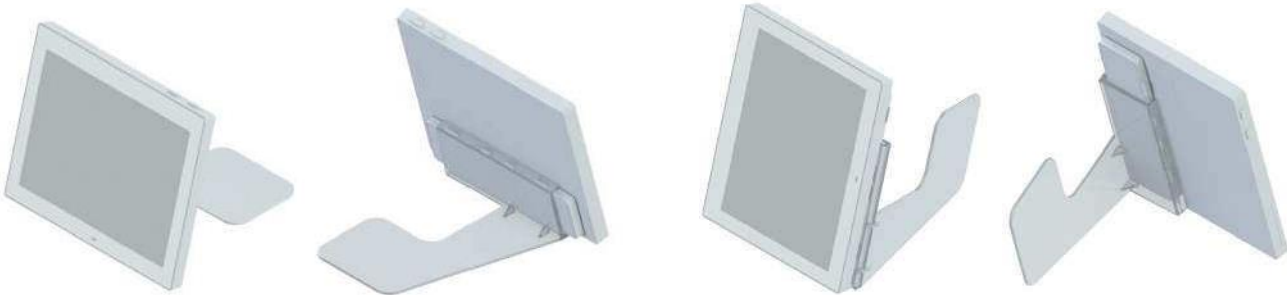
INCLINED SUPPORT FOR 6.0 AND 7.5 SOLUM ESL

CODE	LABELS	COLOR	MATERIAL
01800-00	6.0 / 7.5	Transparent	Polycarbonate
01802-08	6.0 / 7.5	Grey Ral 7012	ABS

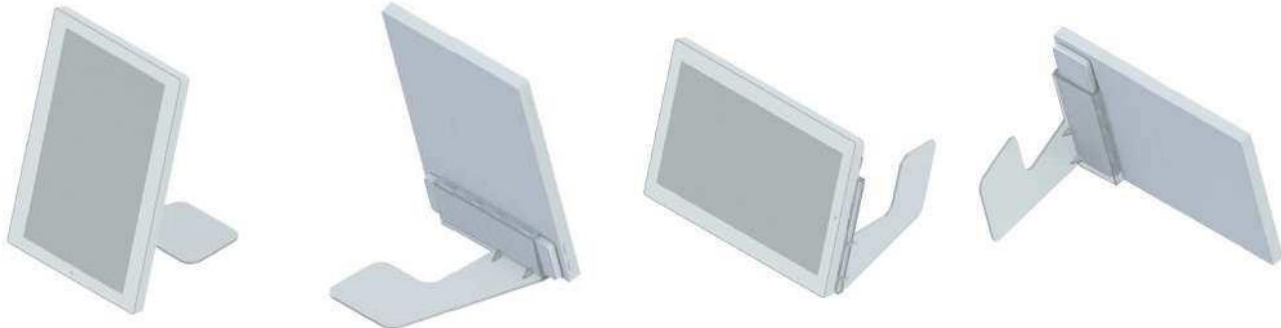
Box units: 25 supports.
Minimum order: 1 box.

01800-00 APPLICATION

6.0"

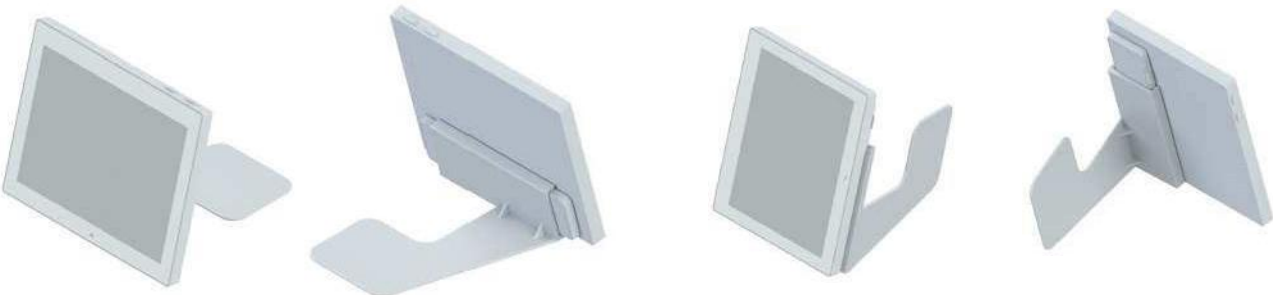


7.5"

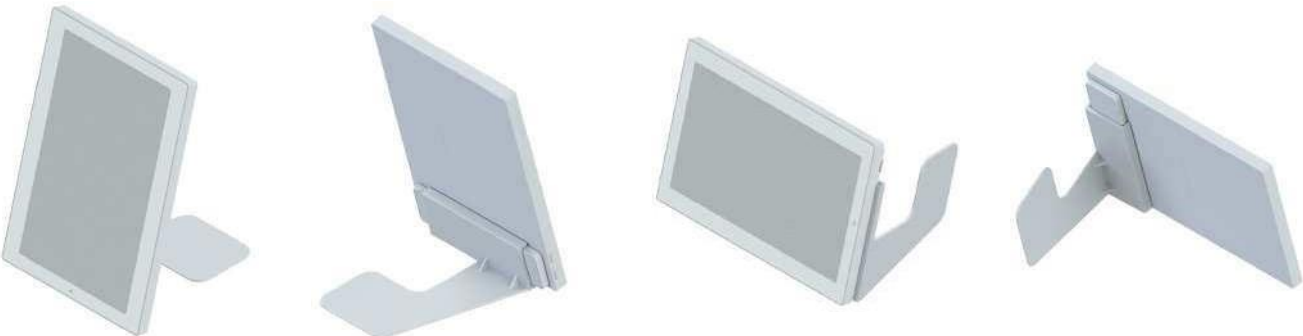


01802-08 APPLICATION

6.0"



7.5"



MAGNETIC CLIP WITH 2 MM NEODYMIUM MAGNET



CODE	LABELS	COLOR	MATERIAL
01850-00	Can be attached to all supports of the program.	Transparent	Polycarbonate
01850-08		GREY RAL 7012	Polycarbonate

Box units: 20
Minimum order: 1 box.

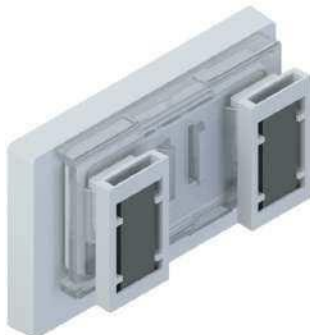
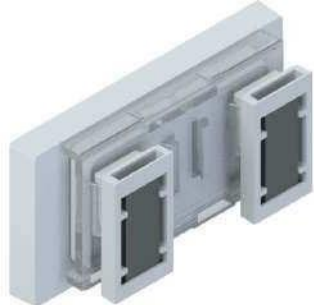
01850-00 APPLICATION

1.6"

2.2"

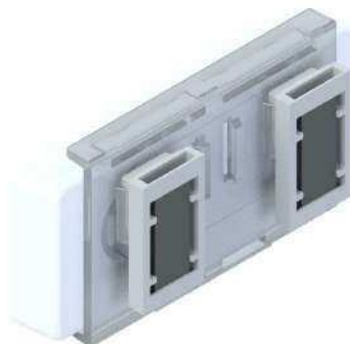
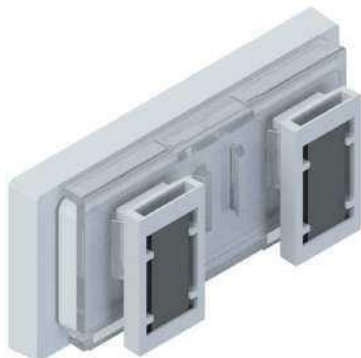
2.6"

2.7"

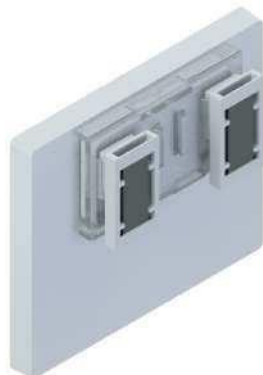


2,9"

2.9" Metro / Makro labels



4.2" (reduced size support)



01850-00 APPLICATION

4.2"



4.3"



4.3" Industrial



6.0" (reduced size support)

7.5" (reduced size support)

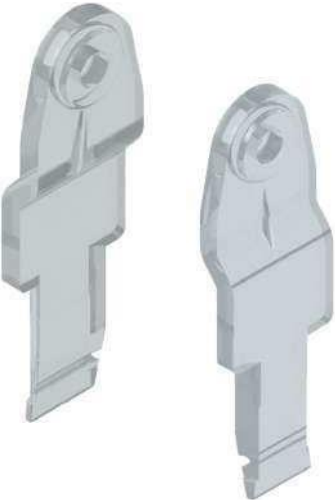


6.0" (standard size support)

7.5" (standard size support)



HANGING CLIP WITH WIRE OR CABLE FOR ESL SOLUM



CODE	LABELS	COLOR	MATERIAL
01860-00	Can be attached to all supports of the program.	Transparent	Polycarbonate

Box units: 20
Minimum order: 1 box.

01860-00 APPLICATION

1.6"



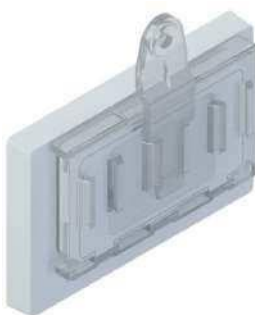
2.2"



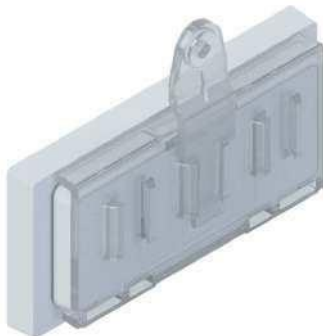
2.6"



2.7"



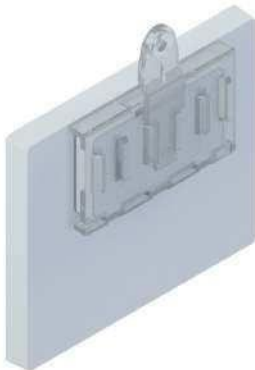
2,9"



2.9" Metro / Makro labels

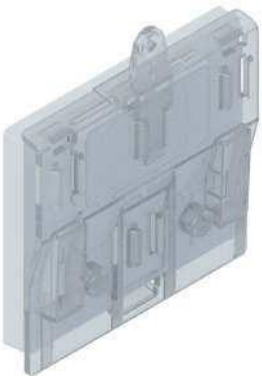


4.2" (reduced size support)

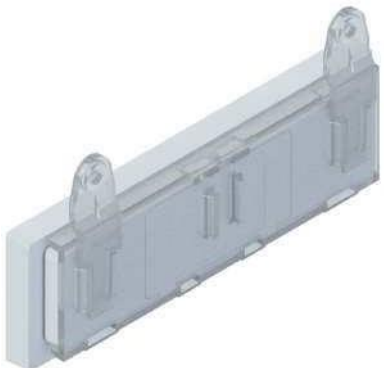


01850-00 APPLICATION

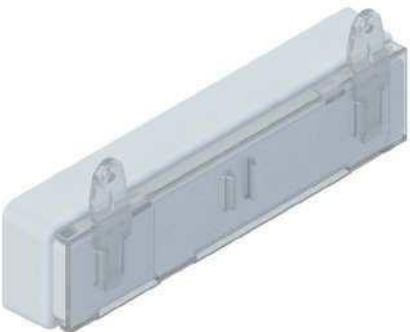
4.2"



4.3"



4.3" Industrial



6.0" (reduced size support)



7.5" (reduced size support)



6.0" (standard size support)



7.5" (standard size support)



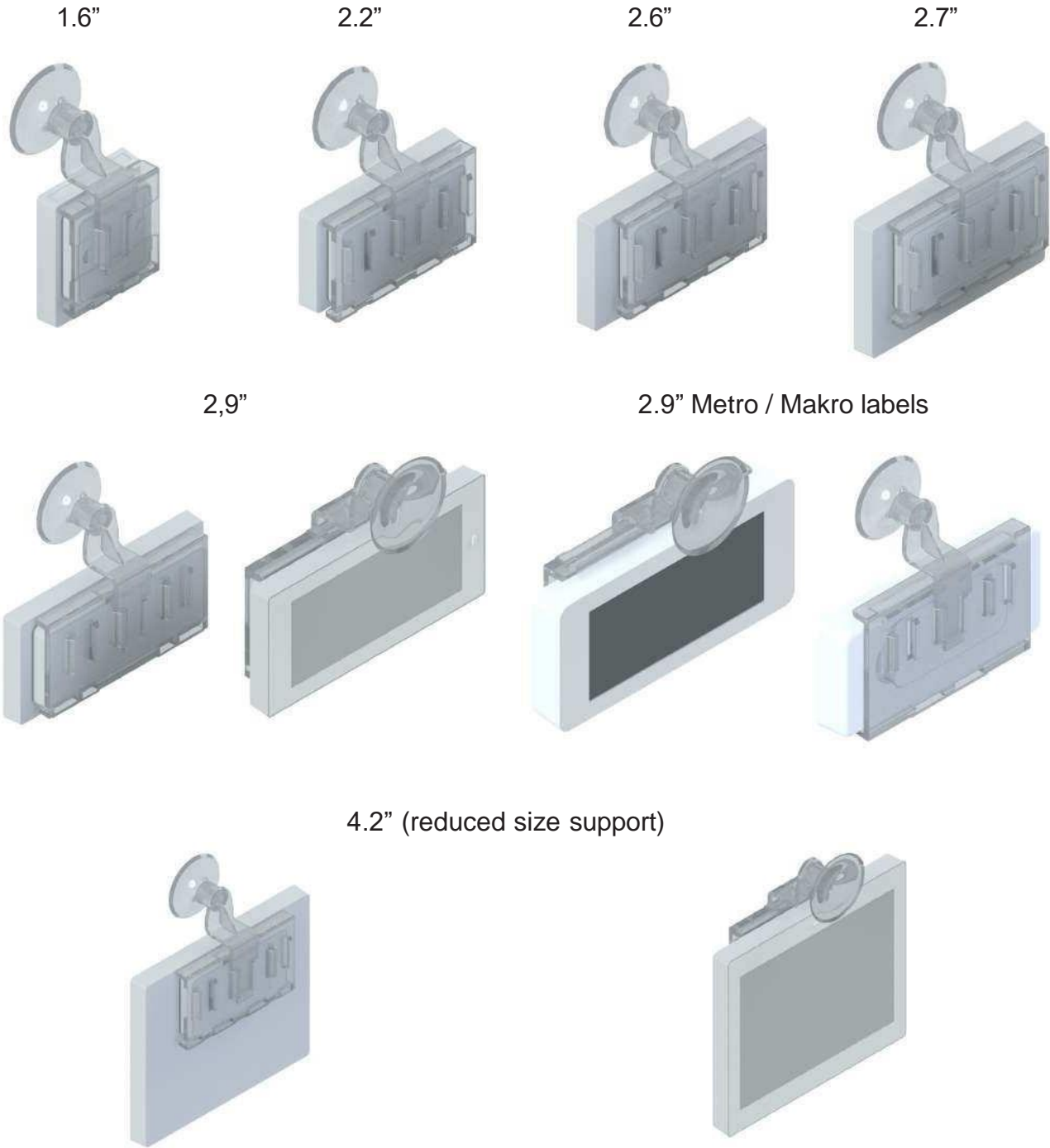
SUCTION CUP CLIP FRONT POSITION



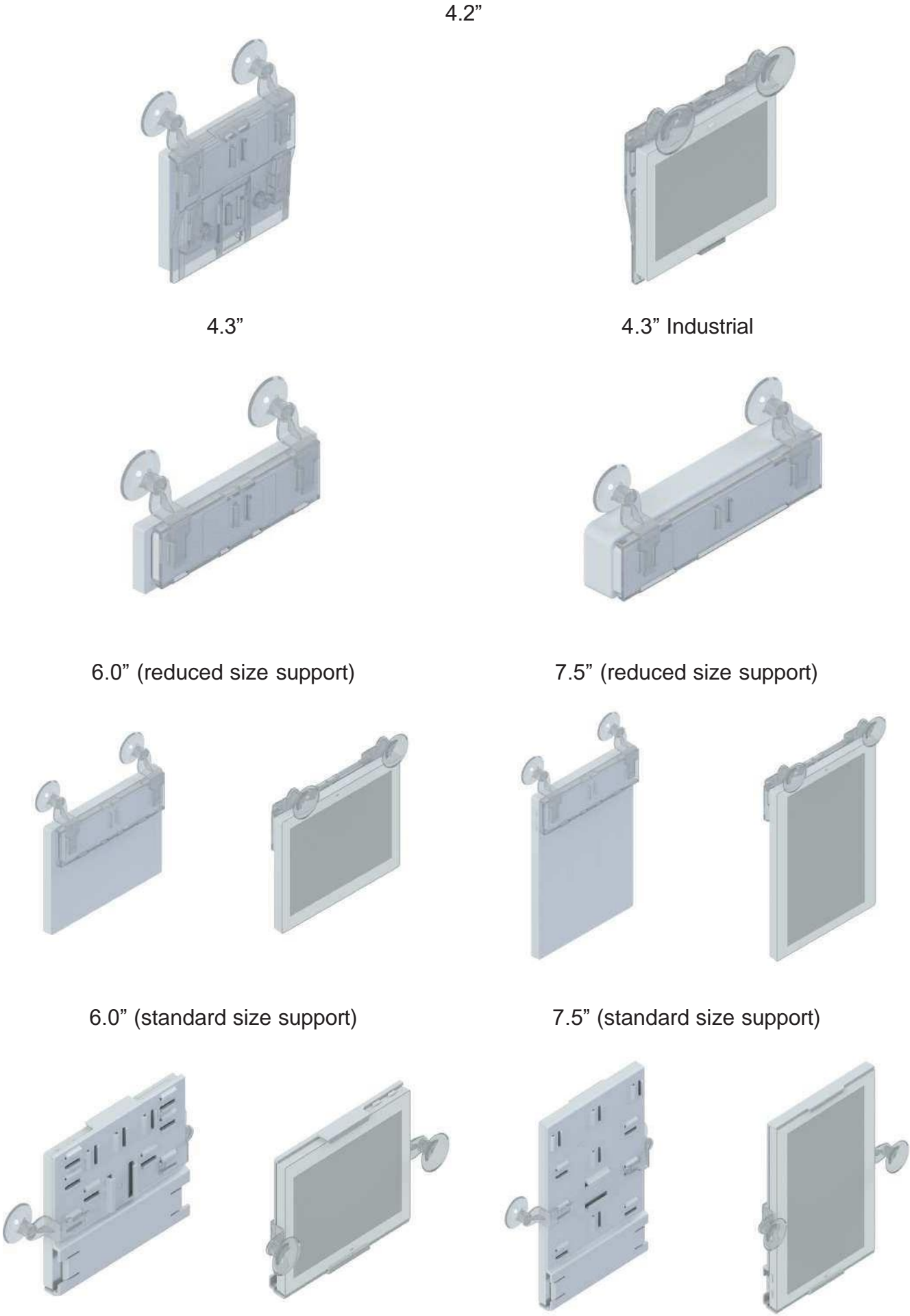
CODE	LABELS	COLOR	MATERIAL
01870-00	Can be attached to all supports of the program.	Transparent	Polycarbonate

Box units: 20
Minimum order: 1 box.

01870-00 APLICATION



01870-00 APLICATION



SUCTION CUP CLIP BACK POSITION



CODE	LABELS	COLOR	MATERIAL
01880-00	Can be attached to all supports of the program.	Transparent	Polycarbonate

Box units: 20
Minimum order: 1 box.

01880-00 APPLICATION

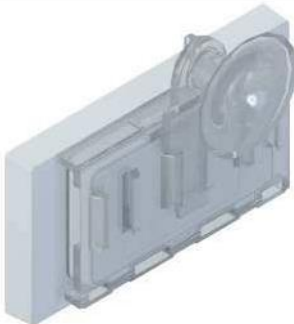
1.6"



2.2"



2.6"



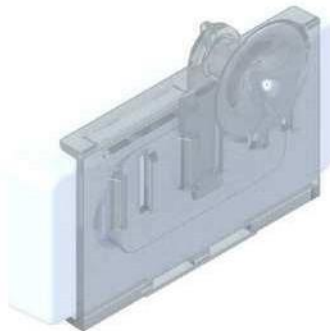
2.7"



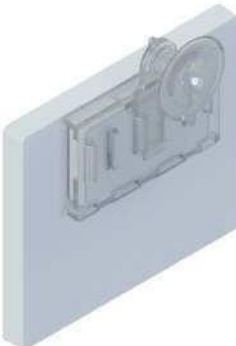
2,9"



2.9" Metro / Makro labels



4.2" (reduced size support)

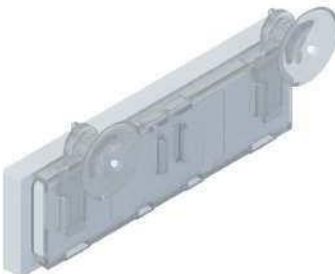


01880-00 APPLICATION

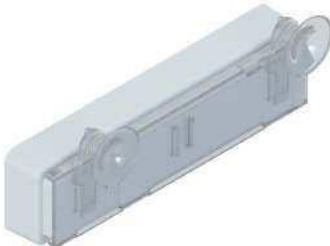
4.2"



4.3"



4.3" Industrial



6.0" (reduced size support)



7.5" (reduced size support)



6.0" (standard size support)



7.5" (standard size support)



HANGING HOOK FOR Ø 8 mm RODS

CODE	LABELS	COLOR	MATERIAL
01890-00	Can be attached to all supports of the program.	Transparent	Polycarbonate
01896-05		Black	Acetal

Box units: 20
Minimum order: 1 box.

HANGING HOOK FOR Ø 12 mm RODS

CODE	LABELS	COLOR	MATERIAL
01900-00	Can be attached to all supports of the program.	Transparent	Polycarbonate
01996-05		Black	Acetal

Box units: 20
Minimum order: 1 box.

01890-00 / 01896-00 / 01900-00 / 01996-05 APPLICATION

1.6"

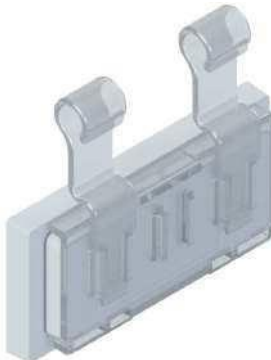
2.2"

2.6"

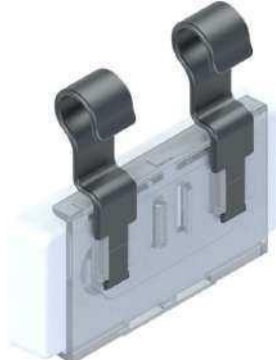
2.7"



2,9"

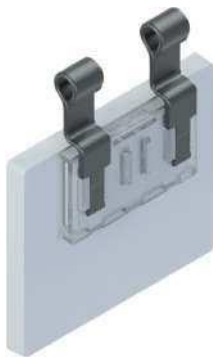


2.9" Metro / Makro labels



01890-00 / 01896-00 / 01900-00 / 01996-05 APPLICATION

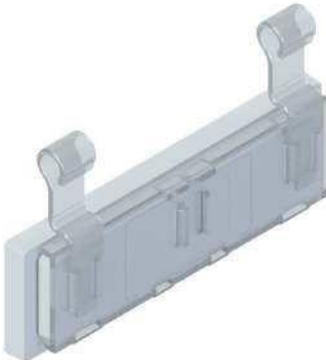
4.2" (reduced size support)



4.2"



4.3"



4.3" Industrial



6.0" (reduced size support)



7.5" (reduced size support)



6.0" (standard size support)



7.5" (standard size support)



HANGING HOOK UNIVERSAL OVL MODEL



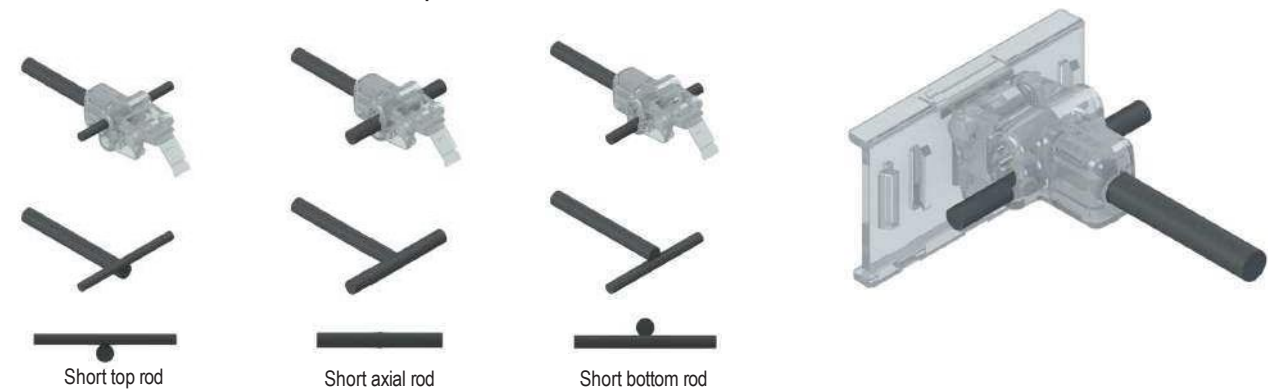
CODE	LABELS	COLOR	MATERIAL
02000-00	Can be attached to all supports of the program.	Transparent	Polycarbonate

Box units: 100
Minimum order: 1 box.

02000-00 APPLICATION



T-Hook Attachment Fits Short Top, Axial, or Bottom Rod Hooks Rod.



It allows you to adjust the inclination according to the height at which the label is placed so that it is always facing the customer.



CHO MODEL CROSS HANGER HOOK WITH THREE DEGREES OF INCLINATION FOR RODS FROM Ø 3 TO 6 MM



CODE	LABELS	COLOR	MATERIAL
02010-00	Small & Medium	Transparent	Polycarbonate

Box units: 100
Minimum order: 1 box.

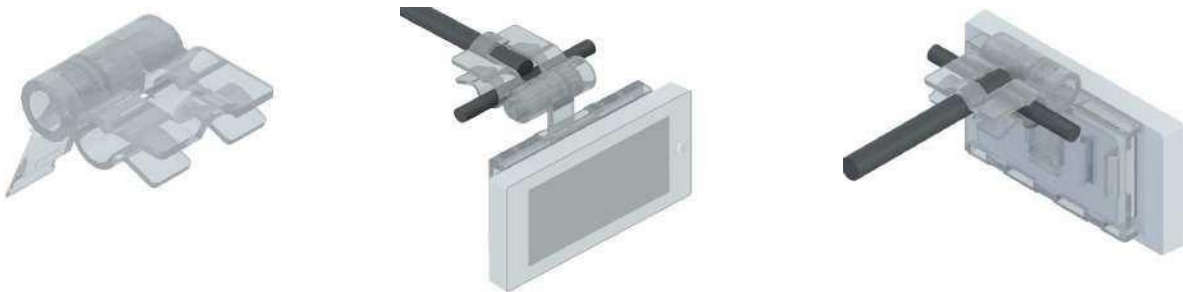
CHO MODEL CROSS HANGER HOOK WITH THREE DEGREES OF INCLINATION FOR RODS FROM Ø 5 TO 8 MM



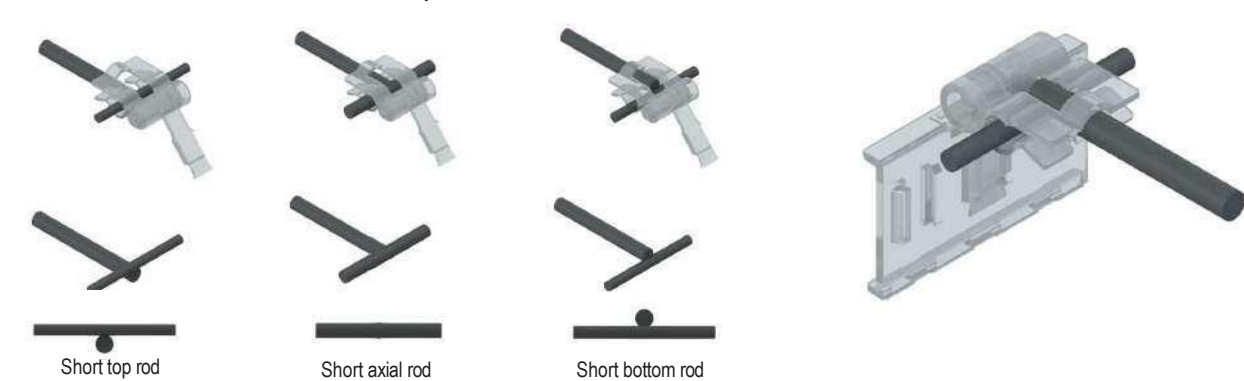
CODE	LABELS	COLOR	MATERIAL
02020-00	Small & Medium	Transparent	Polycarbonate

Box units: 100
Minimum order: 1 box.

02010-00 / 02020-00 APPLICATION



T-Hook Attachment Fits Short Top, Axial, or Bottom Rod Hooks Rod.



It allows you to adjust the inclination according to the height at which the label is placed so that it is always facing the customer.





BOOMERANG MODEL SUPPORT BAR OF 35 MM IN HEIGHT

CODE	LABELS	COLOR	MATERIAL
02030-00	1.6 / 2.2 / 2.6 / 2.7 / 2.9	Transparent	Polycarbonate
02036-05	1.6 / 2.2 / 2.6 / 2.7 / 2.9	Black	Acetal

Box units: 25
Minimum order: 1 box.

02030-00 APPLICATION



02036-05 APPLICATION



BOOMERANG MODEL SUPPORT BAR OF 55 MM IN HEIGHT

CODE	LABELS	COLOR	MATERIAL
02040-00	1.6 / 2.2 / 2.6 / 2.7 / 2.9	Transparent	Polycarbonate
02046-05	1.6 / 2.2 / 2.6 / 2.7 / 2.9	Black	Acetal

Box units: 25
Minimum order: 1 box.

02040-00 APPLICATION



02046-05 APPLICATION



BOOMERANG MODEL SUPPORT BAR OF 110 MM IN HEIGHT

CODE	LABELS	COLOR	MATERIAL
02050-00	1.6 / 2.2 / 2.6 / 2.7 / 2.9 / 4.2	Transparent	Polycarbonate
02056-05	1.6 / 2.2 / 2.6 / 2.7 / 2.9 / 4.2	Black	Acetal

Box units: 25
Minimum order: 1 box.

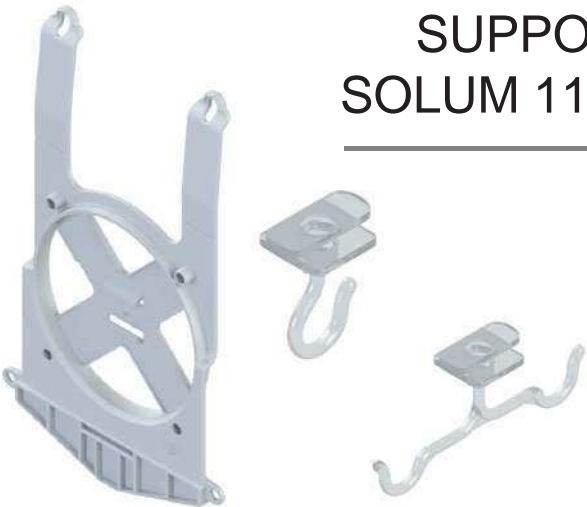
02050-00 APPLICATION



02056-05 APPLICATION



SUPPORT AND HOOKS FOR HANGING SOLUM 11.6 LABELS ON OVERHEAD RAIL



CODE	LABELS	COLOR	MATERIAL
02062-08	1.6	Grey 7012	ABS
02070-00	1.6	Transparent	Polycarbonate
02080-00*	1.6	Transparent	Polycarbonate

Box units: 20
Minimum order: 1 box.
*Available soon

02062-08 APPLICATION



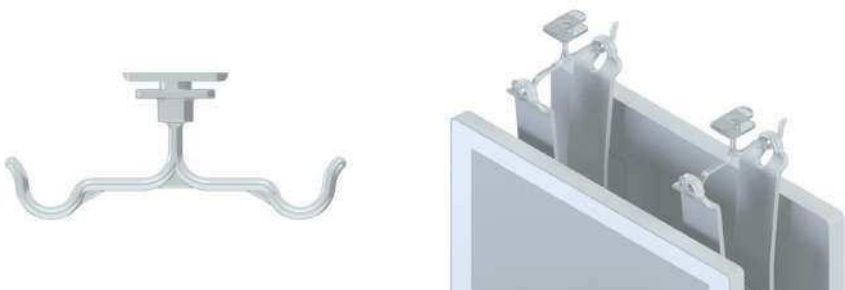
Box units: 5
Minimum order: 1 box.

02070-00 APPLICATION



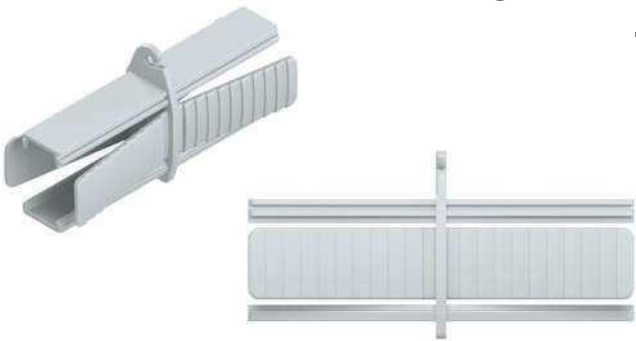
Box units: 50
Minimum order: 1 box.

02080-00 APPLICATION



Box units: 50
Minimum order: 1 box.

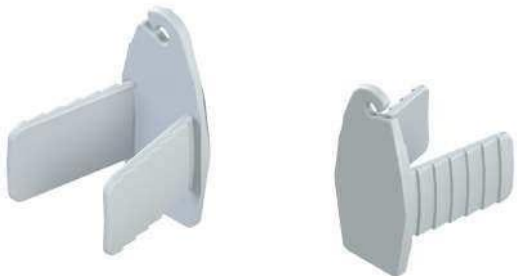
CONNECTION PIECE TO JOIN TWO SECTIONS OF ALUMINUM OVERHEAD PROFILE



CODE	COLOR	MATERIAL
02106-05	Black	ABS

Box units: 4
Minimum order: 1 box.

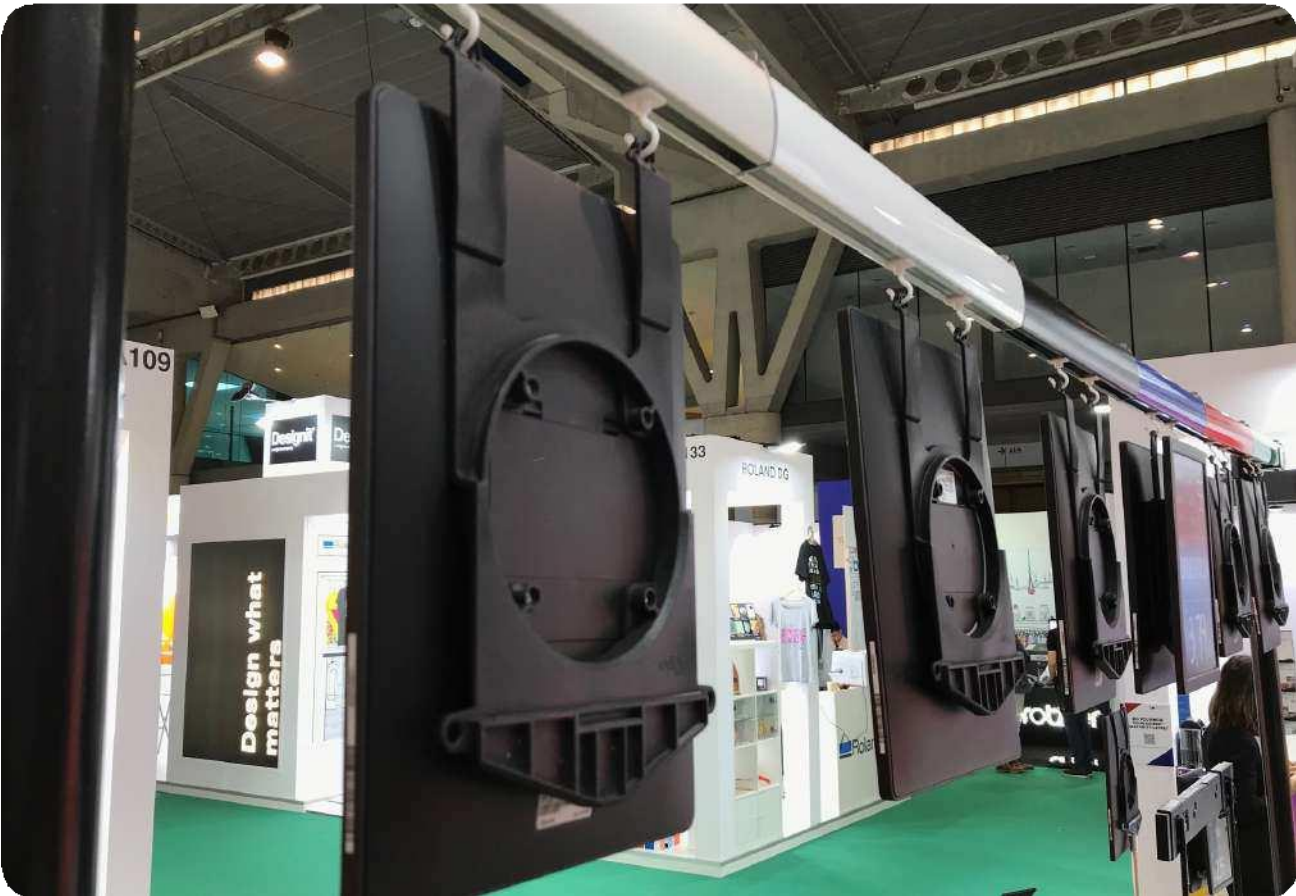
CLOSING CAP FOR THE ENDS OF THE ALUMINUM OVERHEAD PROFILE

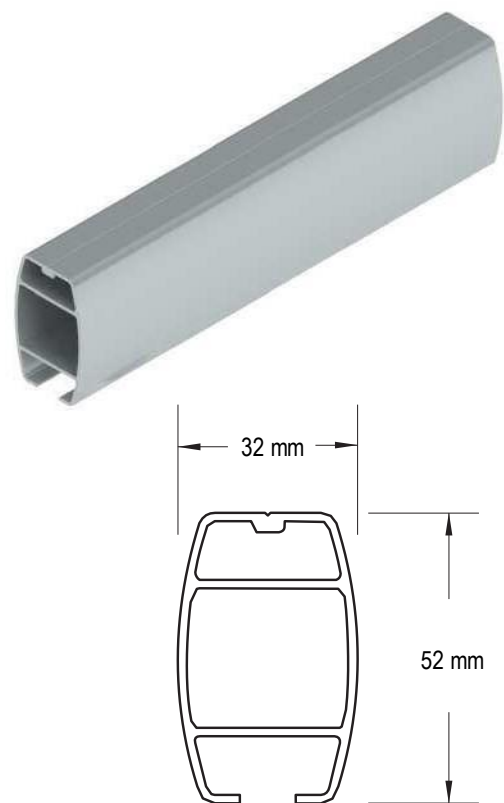


CODE	COLOR	MATERIAL
02110-05	Black	ABS

Box units: 2
Minimum order: 1 box.

02080-00 APPLICATION



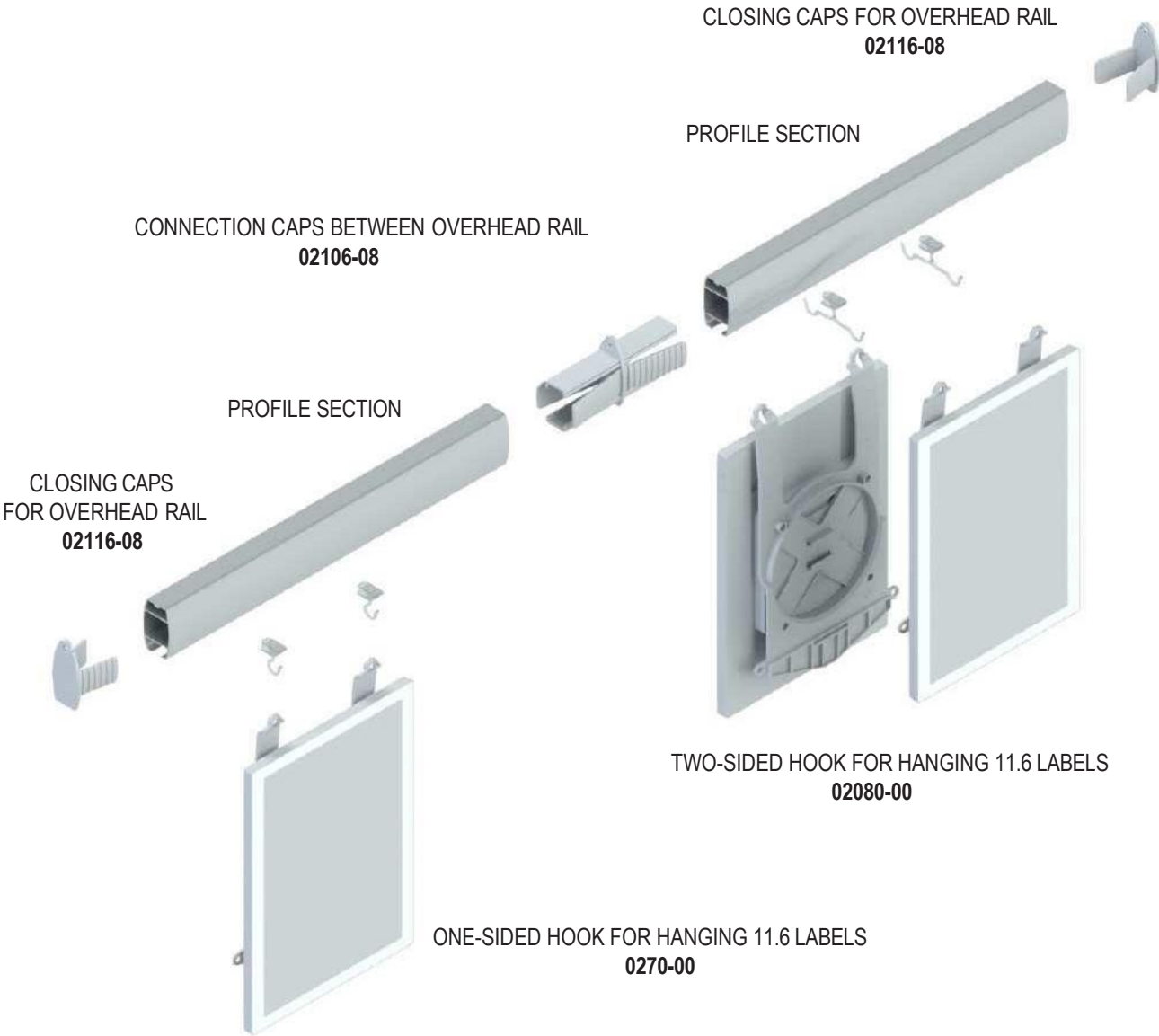
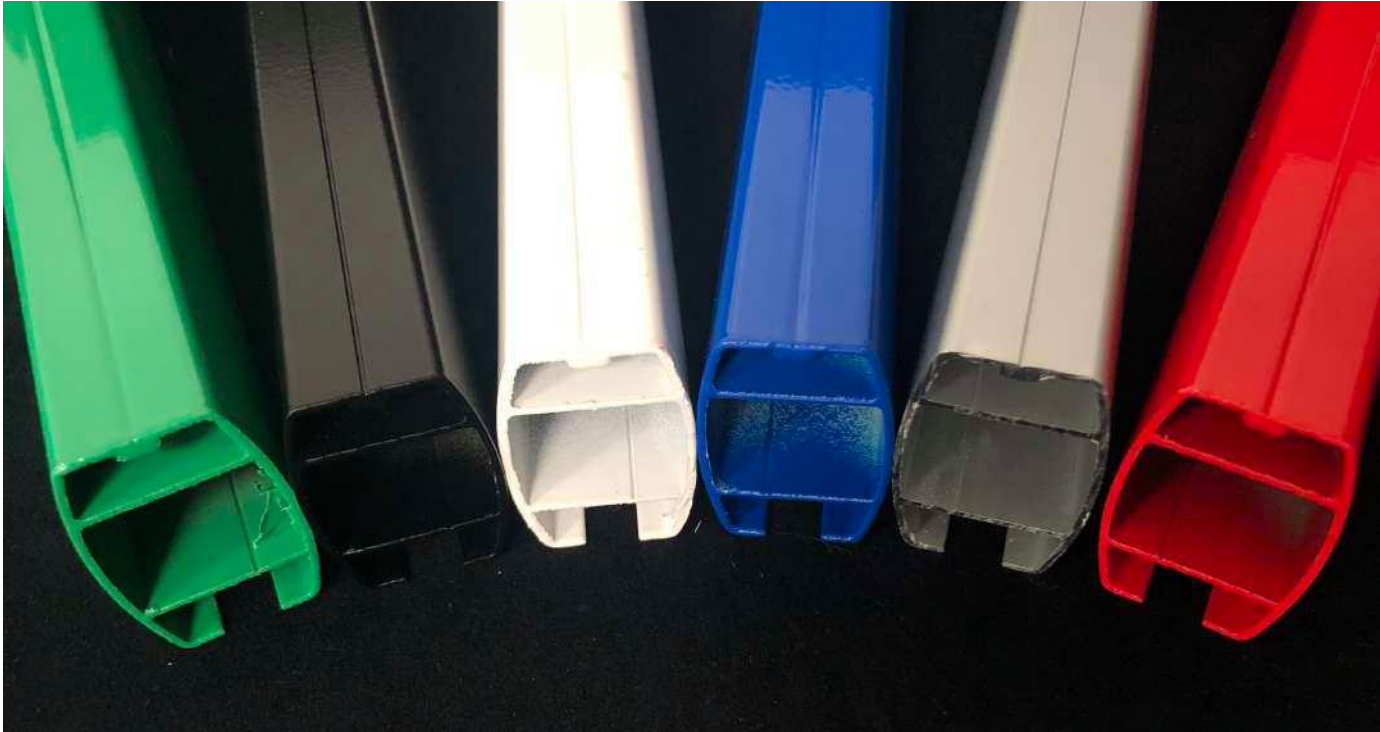


PROFILE FOR HANGING LARGE FORMAT LABELS

CODE	COLOR	LENGTH (mm)	MATERIAL
PEE-1901	White	2000	Aluminum
PEE-1902	Red Ral 3028		
PEE-1903	Blue Ral 5005		
PEE-1904	Green Ral 6024		
PEE-1905	Black		
PEE-1955	Anodized Silver		
PEE-1966	Light Oak		
PEE-1967	Dark Oak		

We can manufacture the profiles in other anodized finishes and colors.

Box units: 20
Minimum order: 1 box.



ANGULAR CONNECTOR CLIP

It provides different angles of inclination on accessories that require the use of this connector.
Essential for the stand clip, double connecting rods, omnclipper® clamps, uniclipper® clippers and clippers for boxes and baskets.

CODE	COLOR	MATERIAL
02300-01	White	Acetal
02300-05	Black	Acetal

Box units: 50
Minimum order: 1 box.

STAND CLIP TO ADJUST THE INCLINATION OF THE LABELS

Angular connector needed (not included)

CODE	LABELS	COLOR	MATERIAL
02305-01	1.6 / 2.2 / 2.6 / 2.7	White	Acetal
02305-05	/ 2.9 / 4.2	Black	Acetal

Box units: 20
Minimum order: 1 box.

02305-01 APPLICATION



02305-05 APPLICATION



120 MM RODS TO TILT THE STANDARD SIZE SUPPORTS FOR ESL SOLUM 6.0 AND 7.5

Angular connector needed (not included)

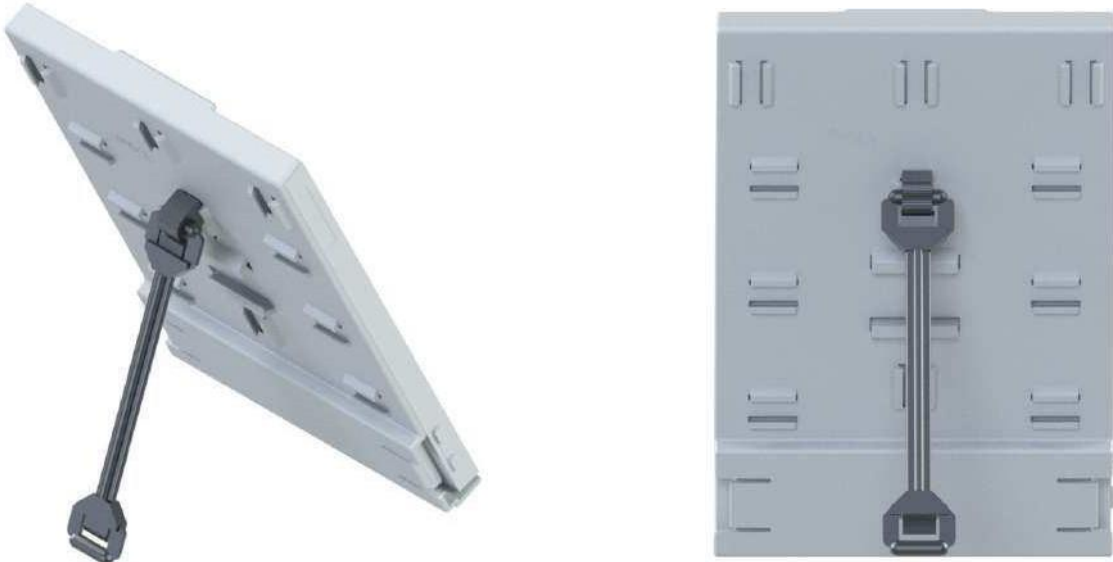
CODE	LABELS	COLOR	MATERIAL
02325-01	6.0 / 7.5	White	Acetal
02325-05		Black	Acetal

Box units: 20
Minimum order: 1 box.

02325-01 APPLICATION



02325-05 APPLICATION





DOUBLE CONNECTION RODS

They allow the supports and accessories that require the use of these rods to be displayed at different heights.

Must-have for adding standard size supports to esl newton 6.0 And 7.5 Supports, rod bases, omnclipper® clamps, and clamps for boxes and baskets.

TRANSPARENT	WHITE	BLACK	LENGTH (MM)
02310-00	02310-01	02310-05	10
02315-00	02315-01	02315-05	35
02320-00	02320-01	02320-05	60
02325-00	02325-01	02325-05	120
02330-00	02330-01	02330-05	170

Box units: 20
Minimum order: 1 box.



BASE FOR DOUBLE CONNECTION RODS

RODS NOT INCLUDED

CODE	LABELS	COLOR	MATERIAL
02600-00	Can be attached to all supports of the program.	Transparent	Polycarbonate
02600-05		Black	Polycarbonate

Box units: 20
Minimum order: 1 box.

02600-00 / 02600-05 APPLICATION



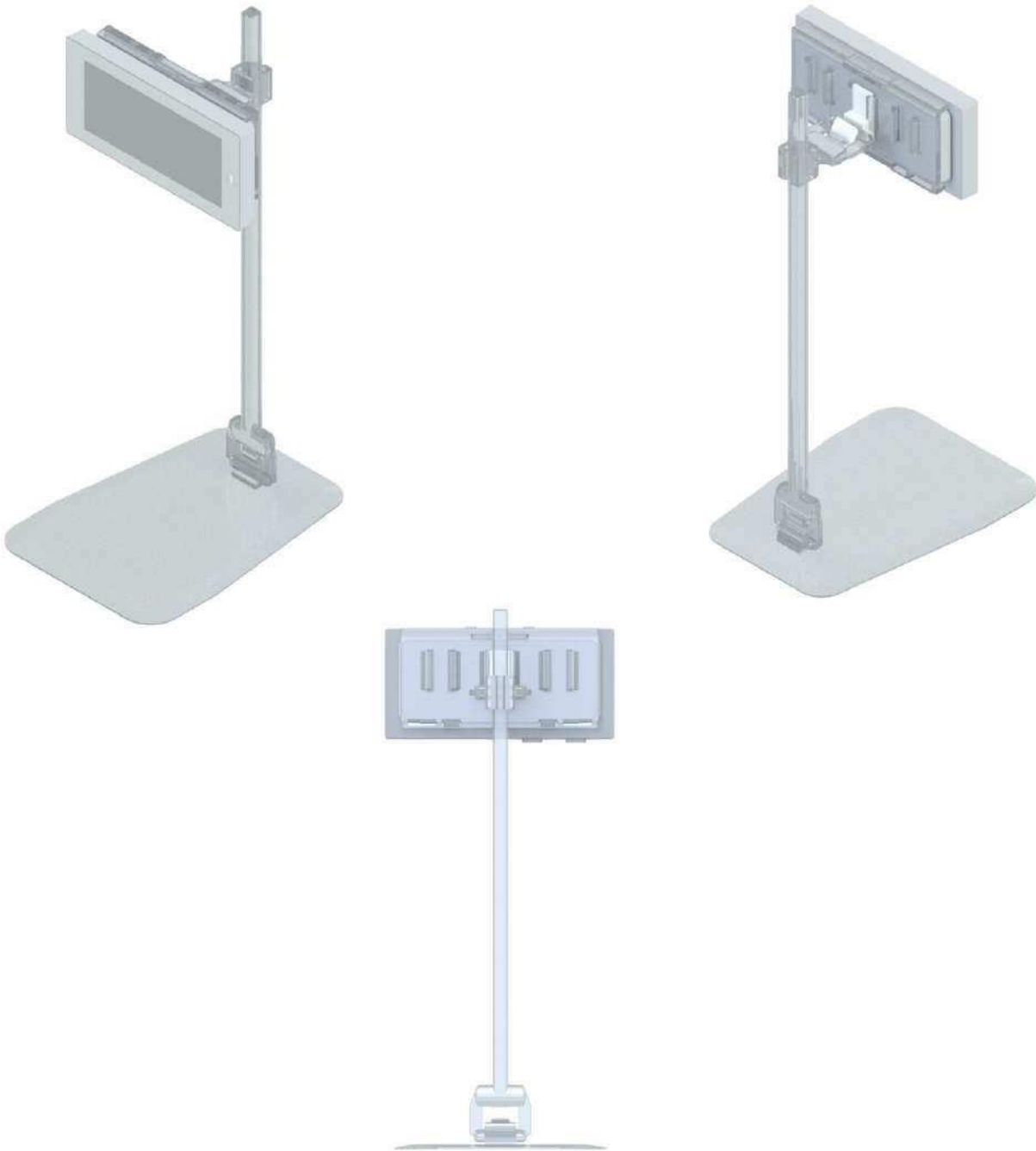
BASE WITH TILTING BAR AND ADJUSTABLE HEIGHT (LENGTH: 200MM)



CODE	LABELS	COLOR	MATERIAL
02605-00	Can be attached to all supports of the program.	Black	Polycarbonate

Box units: 20
Minimum order: 1 box.

02605-00 APPLICATION





METAL BASE WITH FIXED BAR
AND ADJUSTABLE HEIGHT
Special for hot surfaces

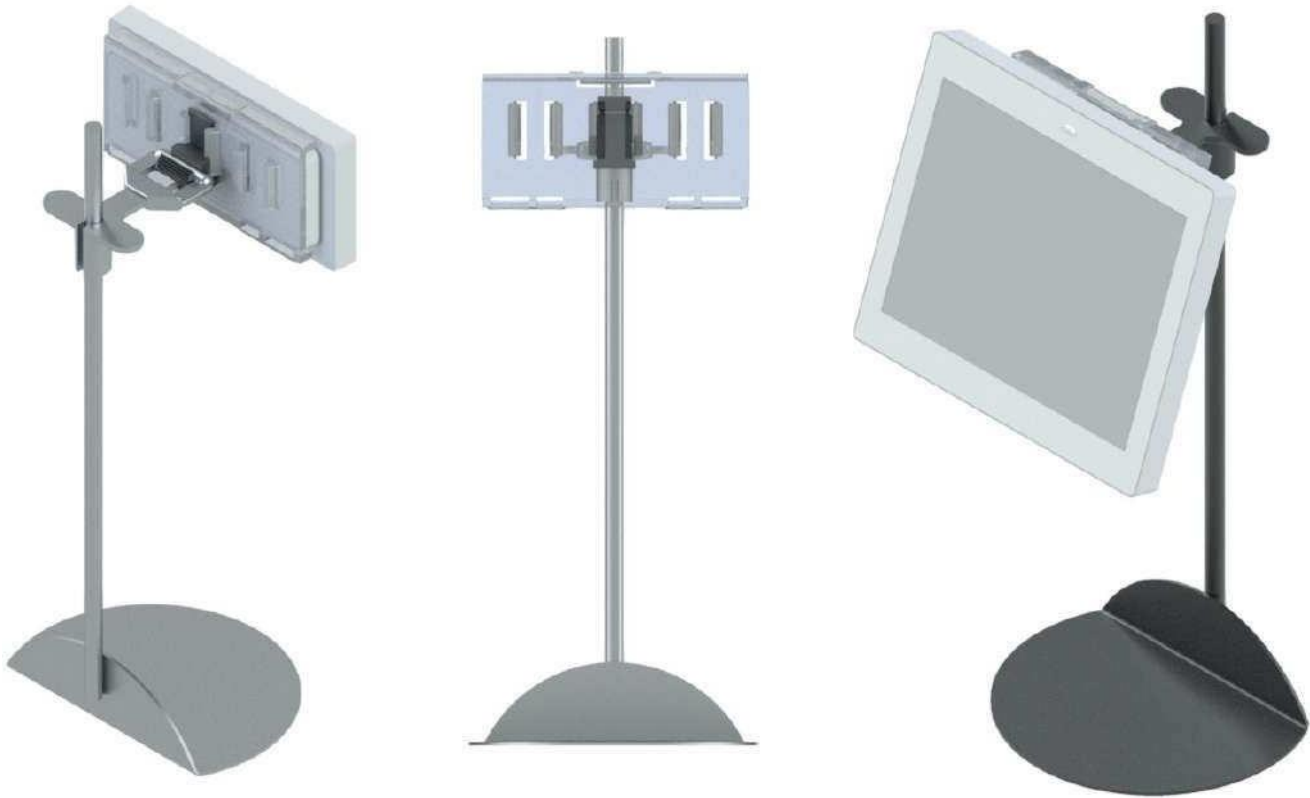
METAL COLOR	COLOR BLACK	LABELS	BAR HEIGHT (MM)
02610-20	02610-05 *	1.6 / 2.2 / 2.6 / 2.7 / 2.9 / 2.9 Metro / Makro	100
02615-20	02615-05 *	4.2 / 4.3 / 4.3 industrial 6.0 / 7.5 reduced size	185

Box units: 20
Minimum order: 1 box.

02610-20 / 02610-05 APLICACION



02615-20 / 02615-05 APLICACION



METAL BASE
WITH TELESCOPIC BAR



CODE	LABELS	COLOR	BAR HEIGHT (MM)
02620-05	1.6 / 2.2 / 2.6 / 2.7 / 2.9 / 2.9 Metro / Makro	Black	150 < 250
02625-05	4.2 / 4.3 / 4.3 industrial 6.0 / 7.5 reduced size		250 < 400

Box units: 20
Minimum order: 1 box.

02620-05 APLICACION



02625-05 APLICACION



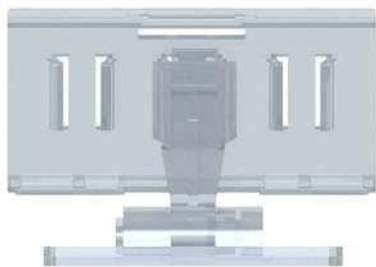
BASE FOR SMALL FORMAT SUPPORTS WITH ADJUSTABLE INCLINATION



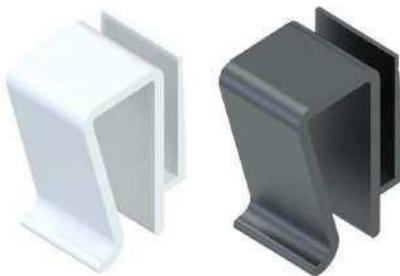
CODE	COLOR	LABELS	MATERIAL
02631-00	Transparent	1.6 / 2.2 / 2.6 / 2.7 / 2.9 / 2.9 Metro / Makro	Polycarbonate

Box units: 20
Minimum order: 1 box.

02631-00 APPLICATION



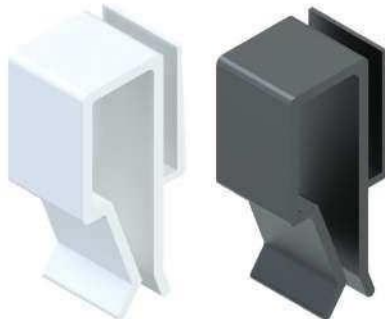
CLIP FOR EDGE FROM 1 TO 6 MM



CODE	LABELS	COLOR	MATERIAL
02340-01	Can be attached to all the supports of the program.	White	Acetal
02340-05		Black	Acetal

Box units: 100
Minimum order: 1 box.

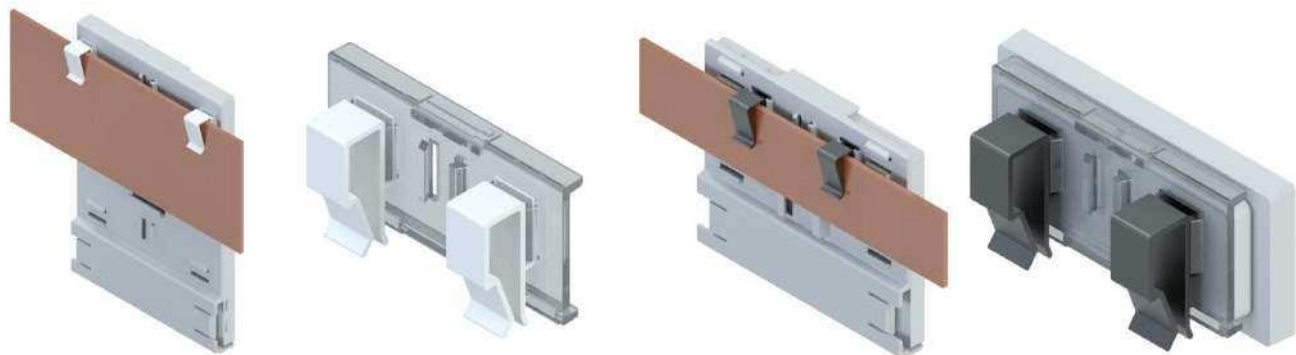
CLIP FOR EDGE FROM 1 TO 12 MM



CODE	LABELS	COLOR	MATERIAL
02345-01	Can be attached to all the supports of the program.	White	Acetal
02345-05		Black	Acetal

Box units: 100
Minimum order: 1 box.

02340-01 / 02340-05 / 02345-01 / 02345-05 APPLICATION



EDGE CLIP WITH ANGLE ADAPTER FROM 1 TO 6 MM

CODE	LABELS	COLOR	MATERIAL
02350-01	Can be attached to all the supports of the program.	White	Acetal
02350-05		Black	Acetal

Box units: 100
Minimum order: 1 box.

EDGE CLIP WITH ANGLE ADAPTER FROM 1 TO 12 MM

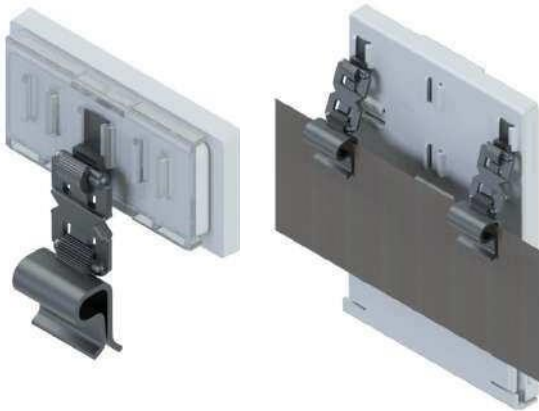
CODE	LABELS	COLOR	MATERIAL
02355-01	Can be attached to all the supports of the program.	White	Acetal
02355-05		Black	Acetal

Box units: 100
Minimum order: 1 box.

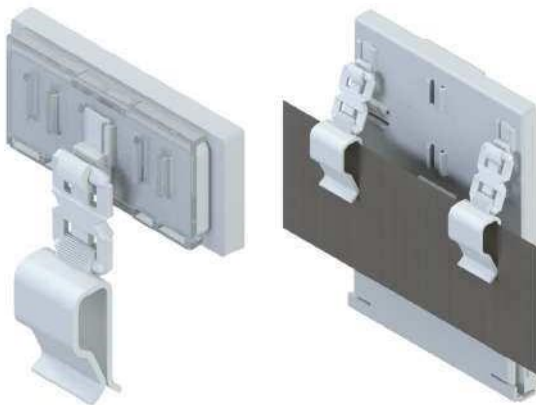
02350-01 APPLICATION



02350-05 APPLICATION



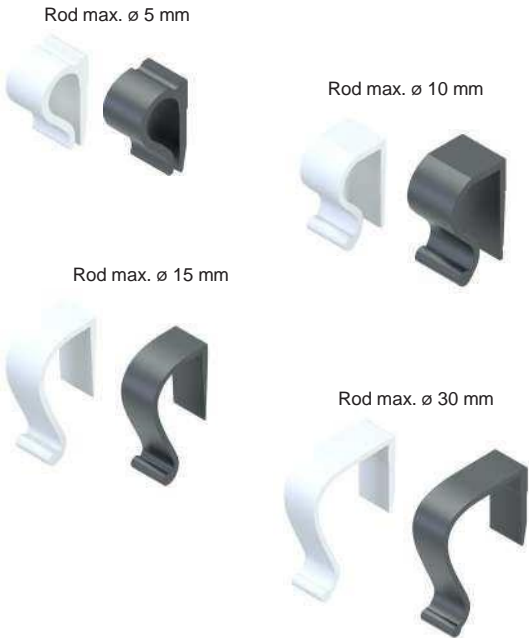
02355-01 APPLICATION



02355-05 APPLICATION



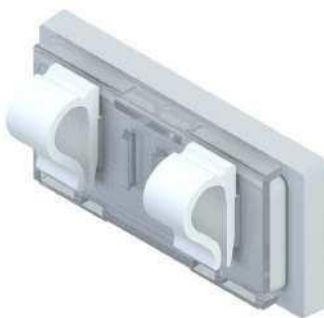
CLIP FOR TUBES AND RODS OF Ø 5, 10, 15 AND 30 MM



WHITE	BLACK	Ø MAX. (MM)	LABELS	MATERIAL
02360-01	02360-05	5	Can be attached to all supports of the program.	Acetal
02365-01	02365-05	10		Acetal
02370-01	02370-05	15		Acetal
02375-01	02375-05	30		Acetal

Box units: 20
Minimum order: 1 box.

02360-01



02360-05



02365-01



02365-05



02370-01



02370-05



02375-01



02375-05

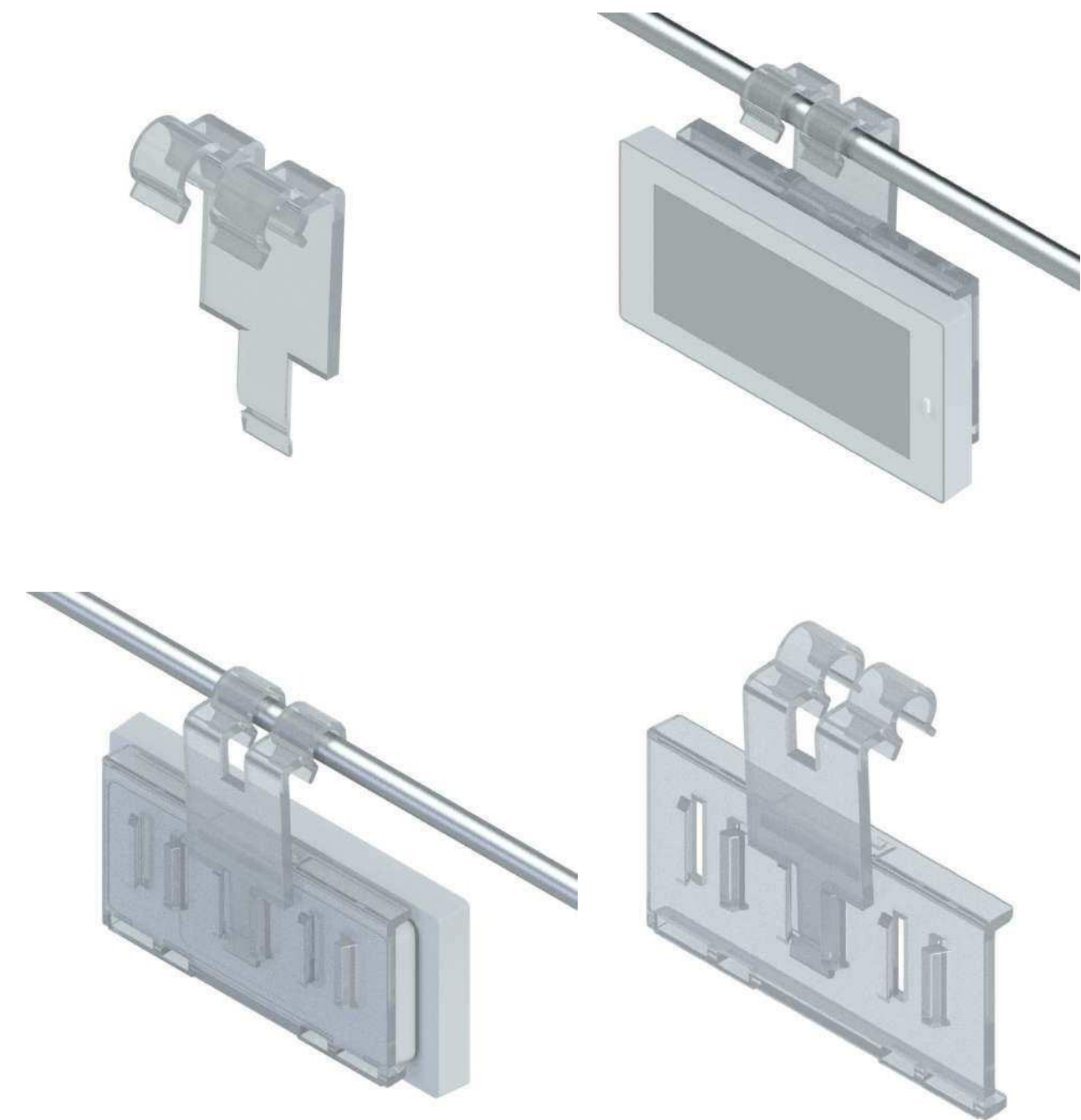


CLIP FOR RODS AND ROD HOOKS FROM Ø 4 TO 6 MM WITH 6MM CENTER

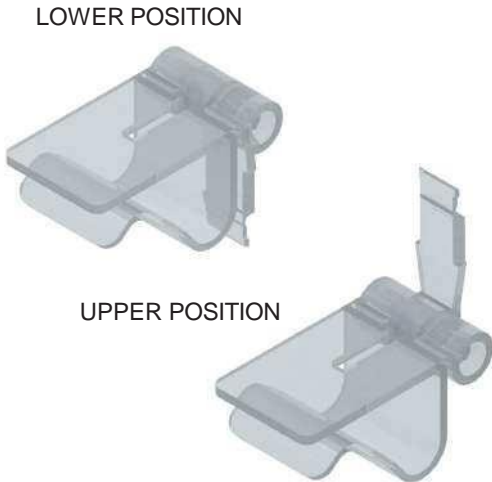


CODE	LABELS	COLOR	MATERIAL
02380-00	Can be attached to all the supports of the program.	Transparent	Polystyrene
Box units: 20 Minimum order: 1 box.			

02610-20 / 02610-05 APPLICATION

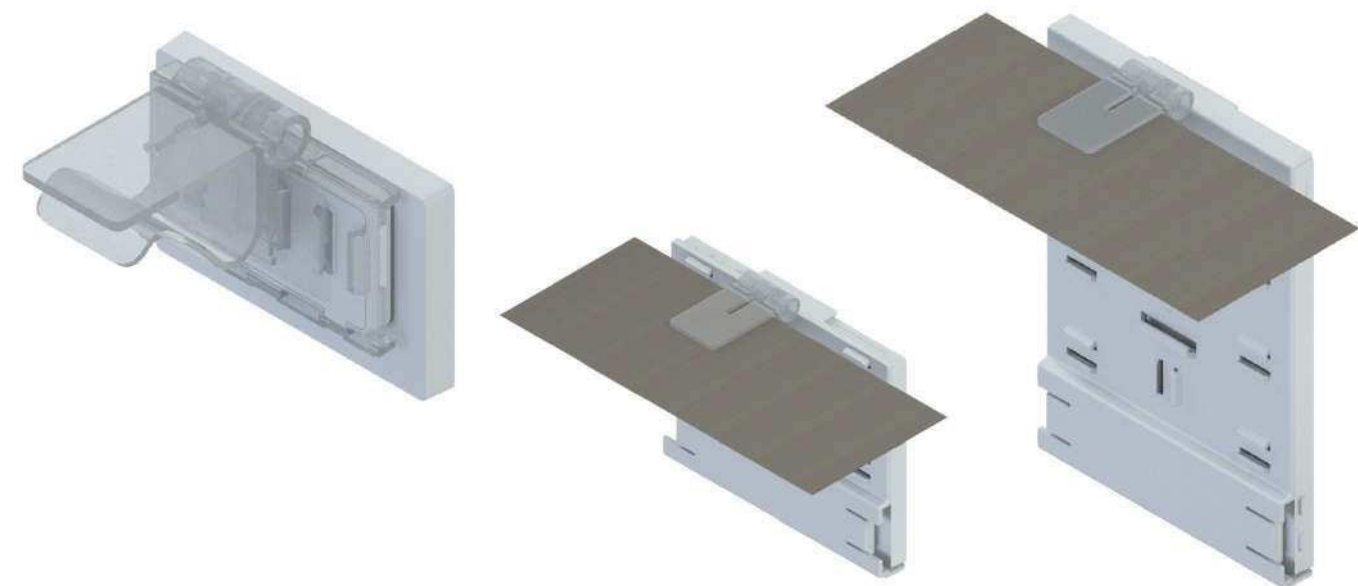


CLIPS FOR SHELVES FROM 8 TO 18 MM WIDTH

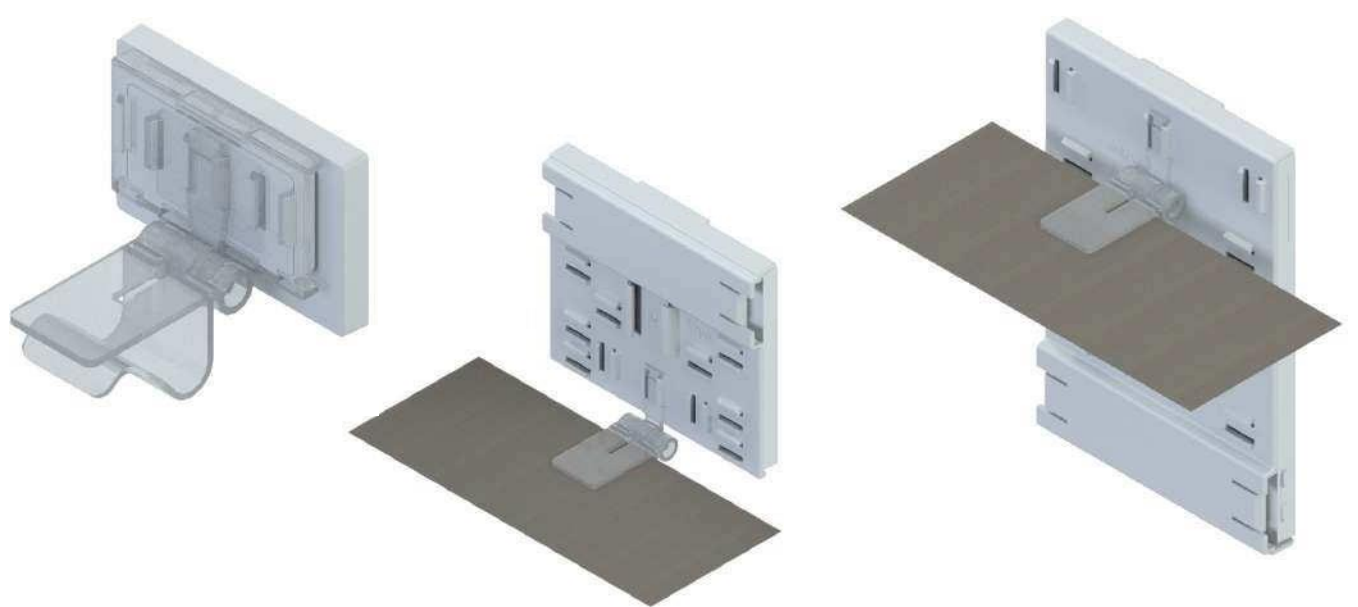


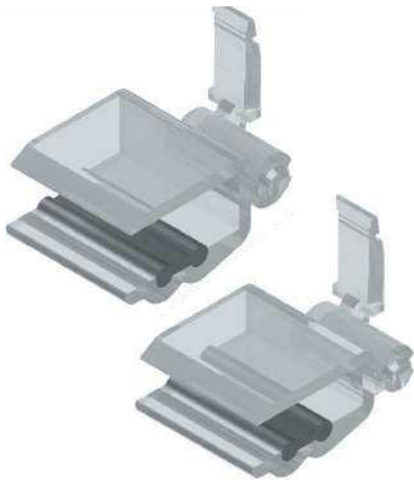
CODE	LABELS	COLOR	MATERIAL
02385-00	Can be attached to all supports of the program.	Transparent	Polycarbonate
02390-00		Transparent	Polycarbonate
			Box units: 20
			Minimum order: 1 box.

02385-00 LOWER POSITION



02390-00 UPPER POSITION



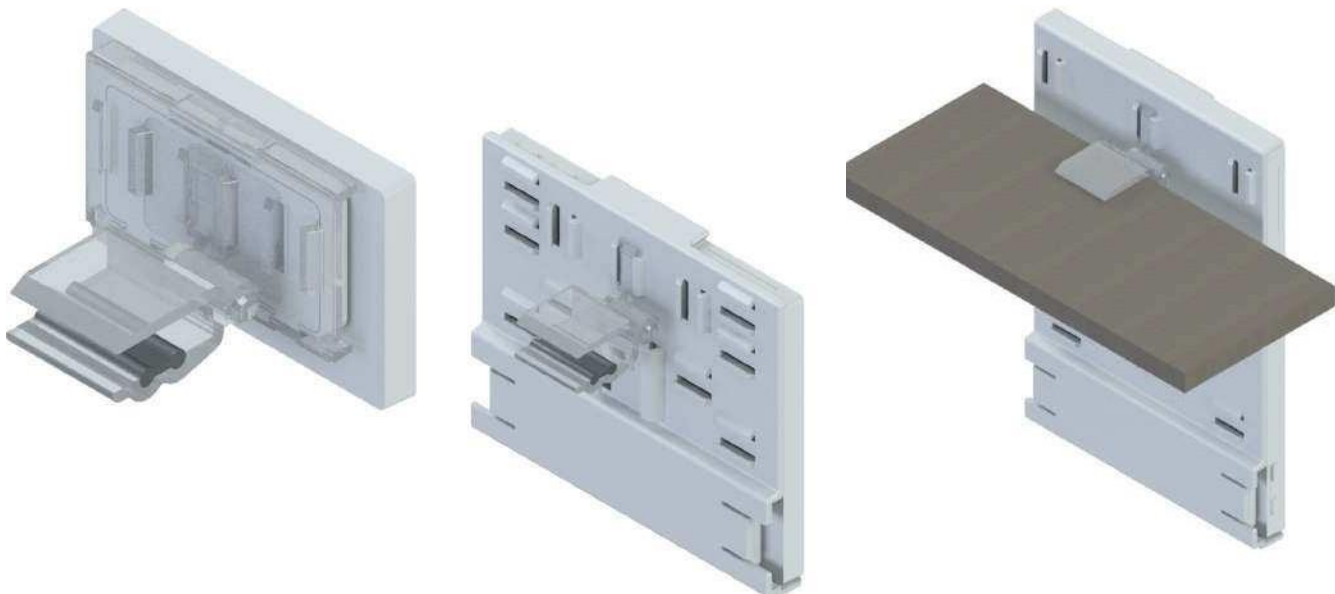


CLIP FOR GLASS SHELVES
FROM 8 to 10 MM THICKNESS
WITH ANTI-SLIP RUBBER

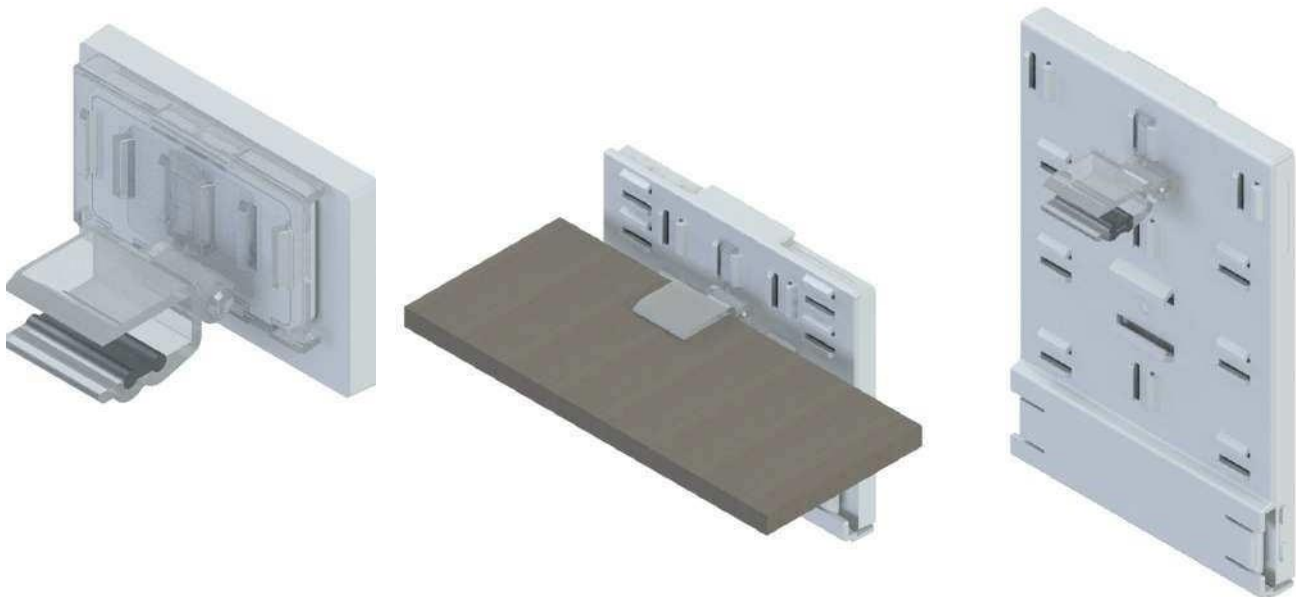
CODE	LABELS	THICKNESS	COLOR	MATERIAL
02395-00	Can be attached to all supports of the program.	8	Transparent	Polycarbonate
02397-00		10	Transparent	Polycarbonate

Box units: 100
Minimum order: 1 box.

02395-00 FOR 8mm WIDTH SHELVES



02397-00 FOR 10mm WIDTH SHELVES



CLIPS FOR SHELVES
FROM 8 TO 18 MM WIDTH

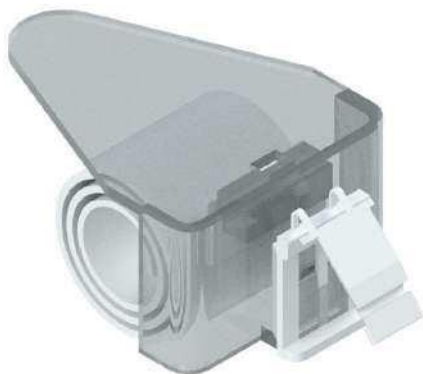
CODE	LABELS	COLOR	MATERIAL
02400-00	Can be attached to all supports of the program.	Transparent	Polycarbonate

Box units: 20
Minimum order: 1 box.

02400-00 APPLICATION

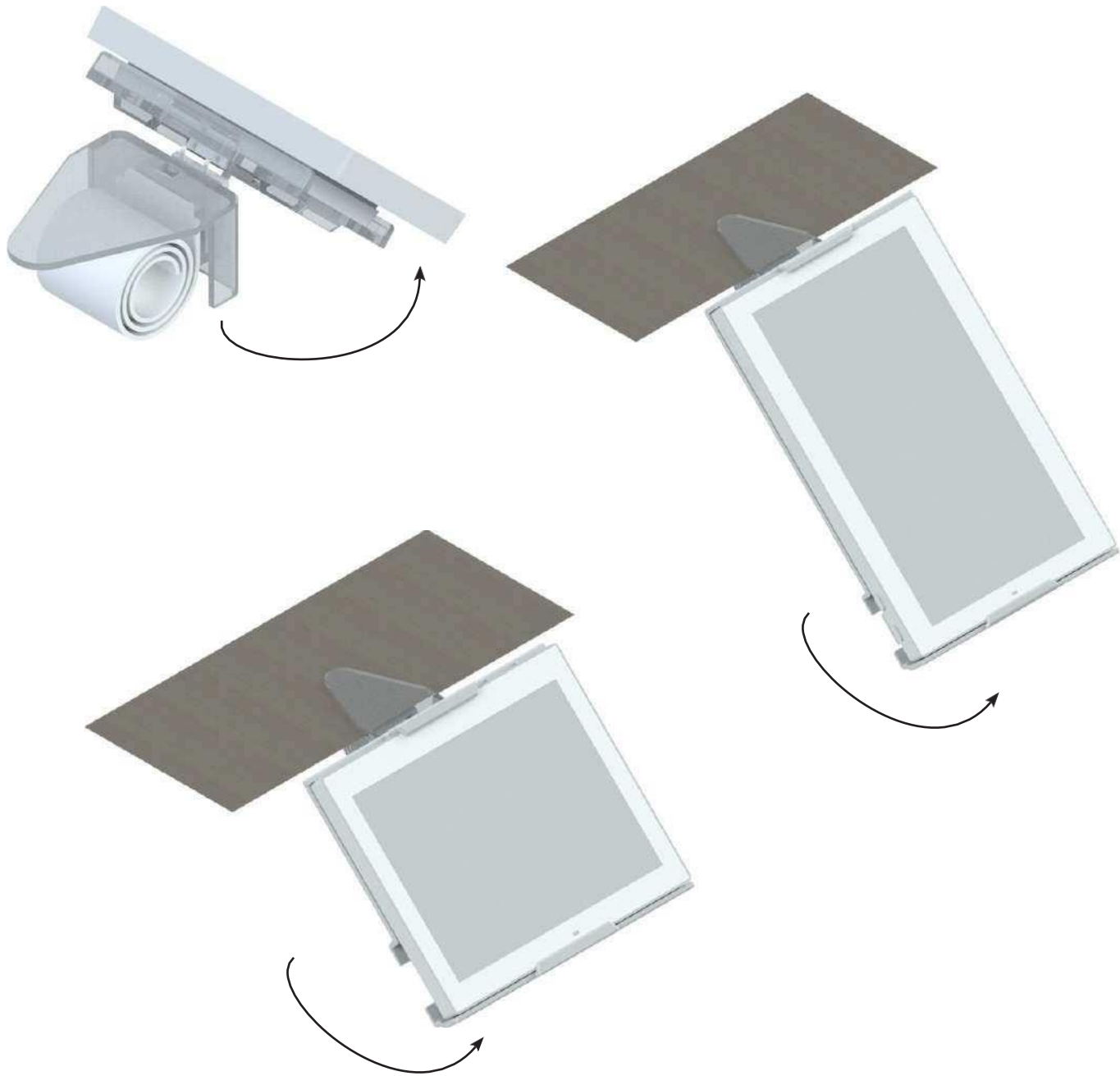


UNIVERSAL SWING CLIP FOR SHELVES FROM 5 TO 30 MM WIDTH



CODE	LABELS	COLOR	MATERIAL
02402-00	Can be attached to all supports of the program.	Transparent	Polycarbonate
Box units: 20 Minimum order: 1 box.			

02402-00 APPLICATION

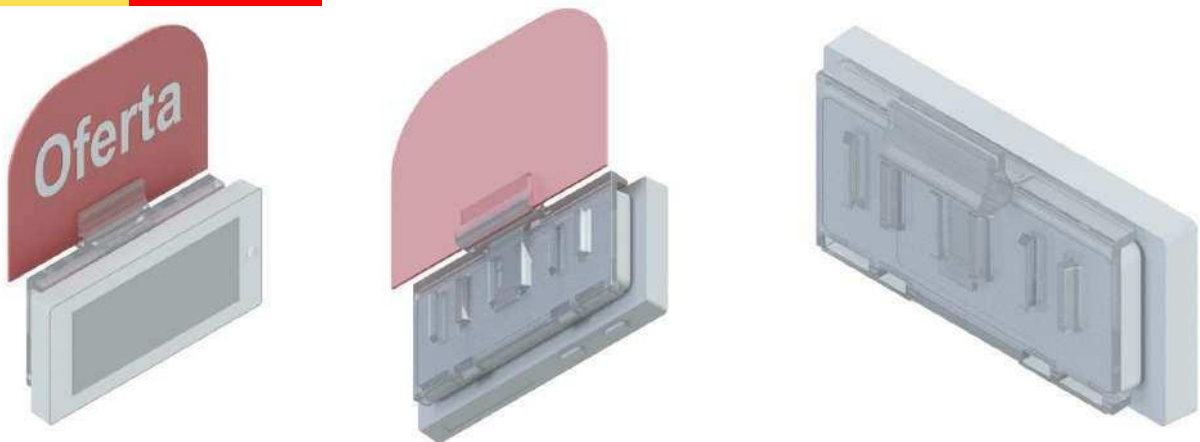


UNIVERSAL CLIP TO PLACE PROMOTIONAL SUPPLEMENTS



CODE	LABELS	COLOR	MATERIAL
02405-00	Can be attached to all supports of the program.	Transparent	Polycarbonate
Box units: 20 Minimum order: 1 box.			

02405-00 APPLICATION

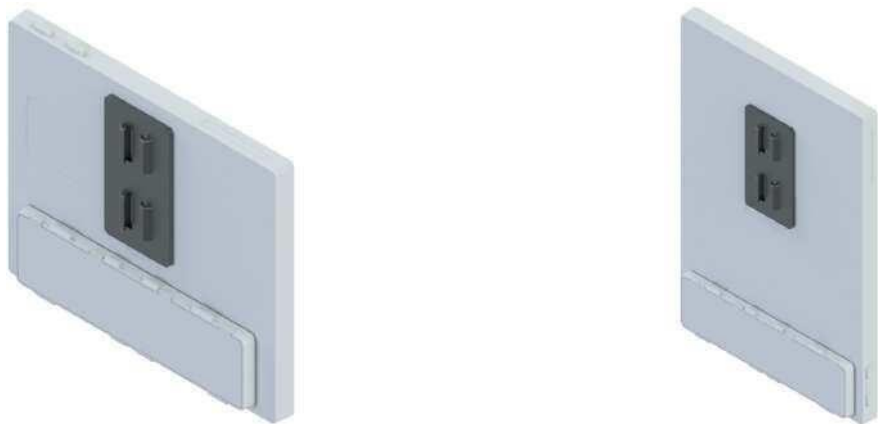


TWO POSITION CONNECTOR WITH STRONG GRIP ADHESIVE



CODE	LABELS	COLOR	MATERIAL
02410-05	Can be attached to all supports of the program.	Black	Acetal
Box units: 20 Minimum order: 1 box.			

02410-05 APPLICATION



ONE POSITION CONNECTOR WITH STRONG GRIP ADHESIVE



CODE	LABELS	COLOR	MATERIAL
02415-00	Can be attached to all supports of the program.	Transparent	Polycarbonate
Box units: 20 Minimum order: 1 box.			

02415-00 APPLICATION



ELECTRONIC LABEL REMOVER TOOL



CODE	LABELS	MATERIAL
09001-15	Can be attached to all supports of the program.	ABS
Minimum order: 1pc.		

09001-15 APPLICATION

To remove labels from the supports or adapters.

To remove labels from the rails or profiles.

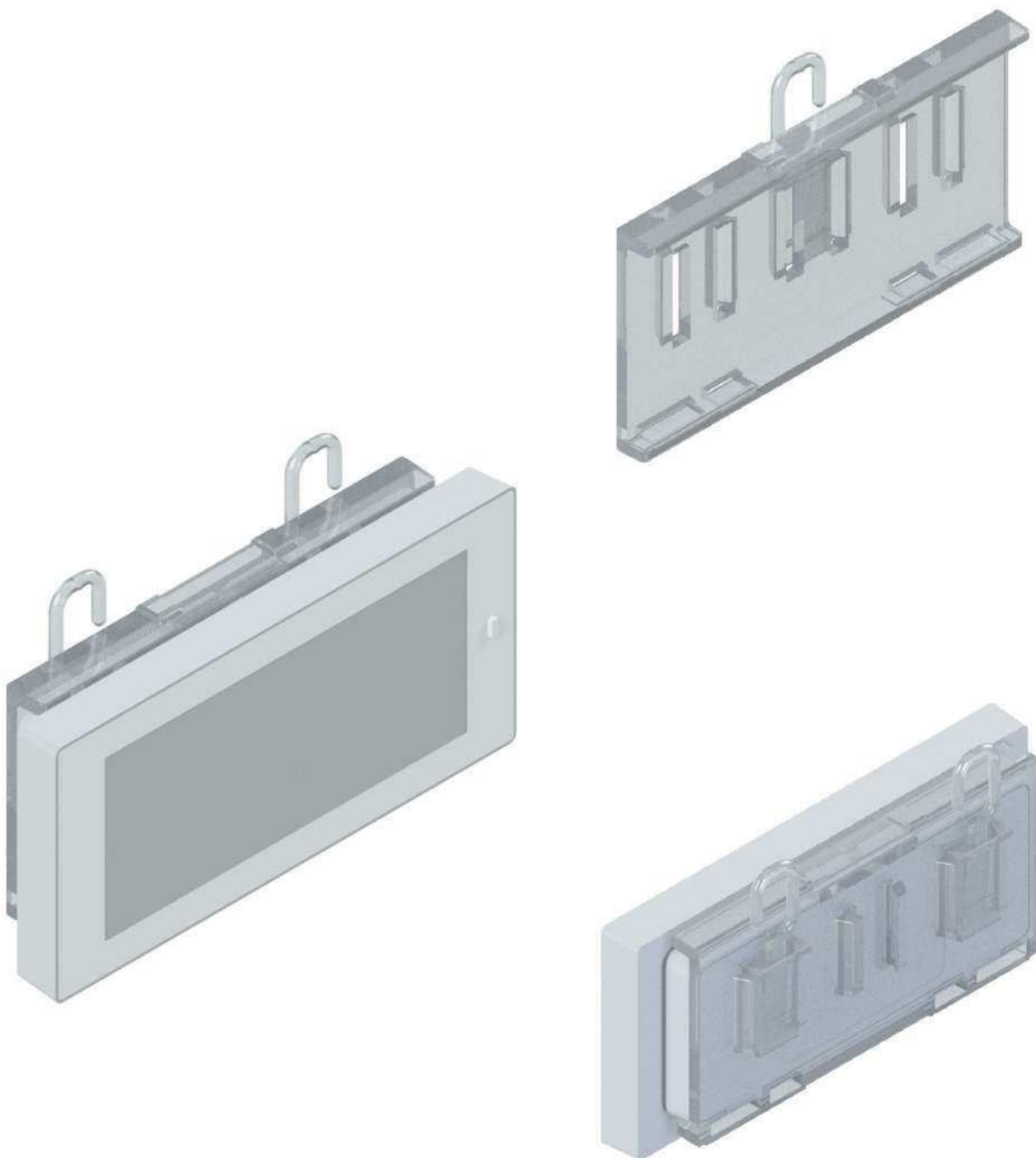


HANGER HOOK WITH 9 MM CONNECTOR



CODE	LABELS	COLOR	MATERIAL
02420-00	Can be attached to all supports of the program.	Transparent	Polycarbonate
Box units: 100 Minimum order: 1 box.			

02420-00 APPLICATION



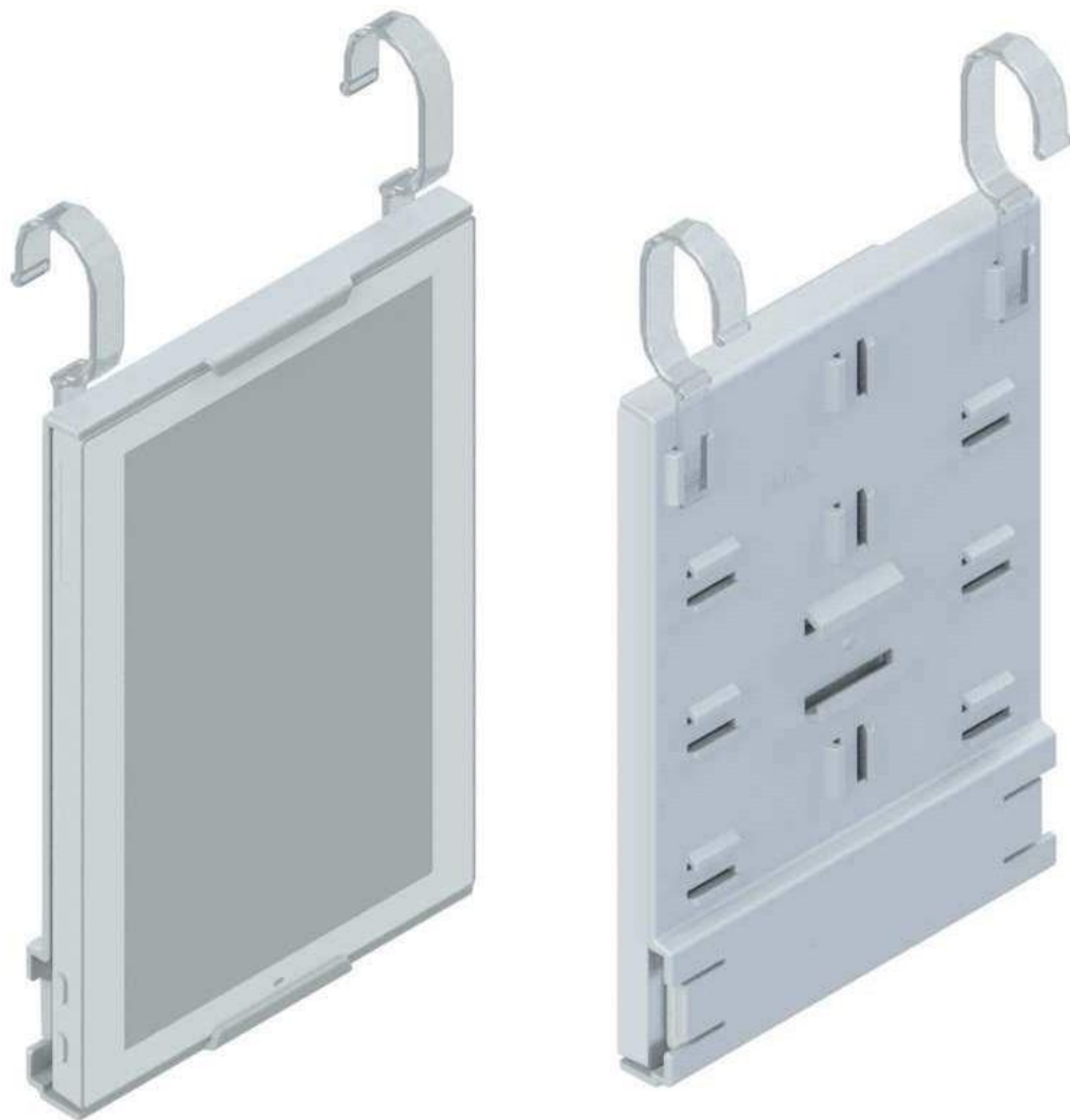


HANGING HOOK FOR TUBES UP TO Ø 20 MM WITH 9 MM CONNECTOR

CODE	LABELS	COLOR	MATERIAL
02425-00	Can be attached to all supports of the program.	Transparent	Polycarbonate
Box units: 100			
Minimum order: 1 box.			

02425-00

APLICACION

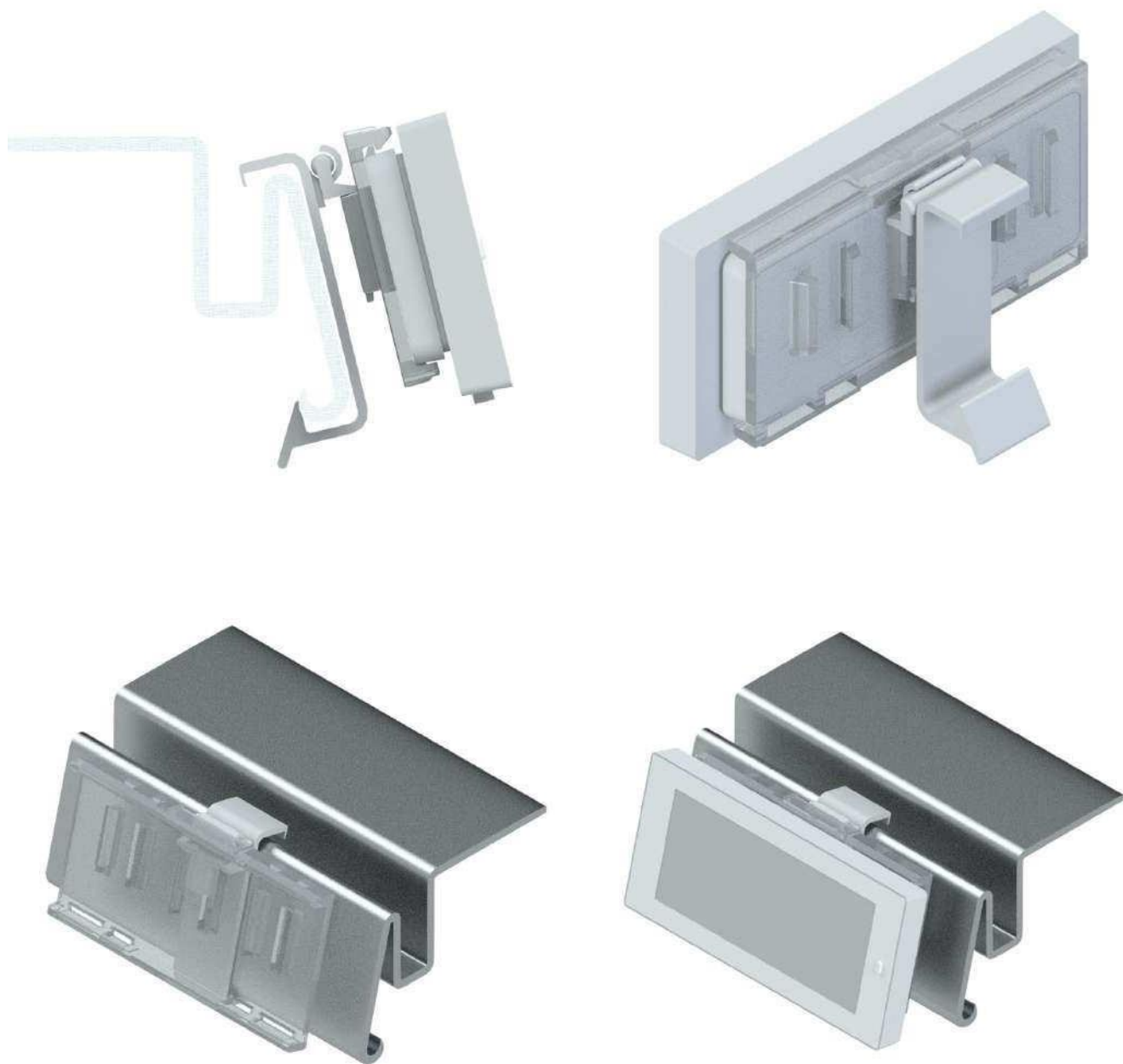


SWING CLIP FOR TEGOMETALL SHELVES WITH 9 MM CONNECTOR

CODE	LABELS	COLOR	MATERIAL
02430-00	Can be attached to all supports of the program.	White	ABS
Box units: 20			
Minimum order: 1 box.			

02430-00

APLICACION



DOUBLE JOINT GRIPPER



CODE	LABELS	COLOR	MATERIAL
02800-05	Can be attached to all supports of the program.	Black	Polycarbonate

Box units: 50
Minimum order: 1 box.

02800-05 APPLICATION



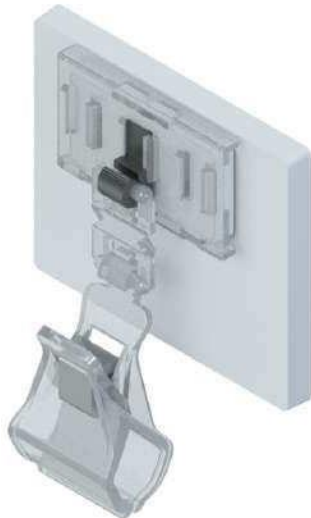
GRIPPER OMNICLIPPER® MODEL



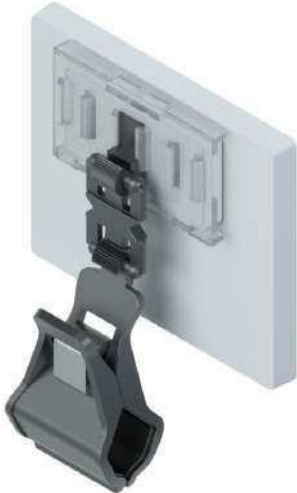
TRANSPARENT	BLACK COLOR	ROD MEASURE (MM)	LABELS
02805-00	02805-05	35	Can be attached to all supports of the program.
02810-00	02810-05	60	

Box units: 20
Minimum order: 1 box.

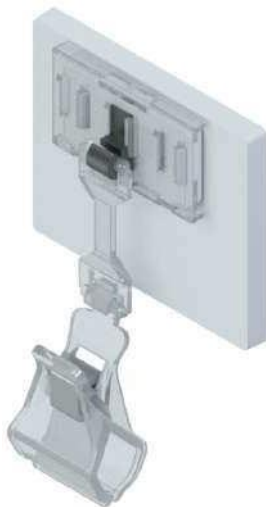
02805-00 With 35mm rod



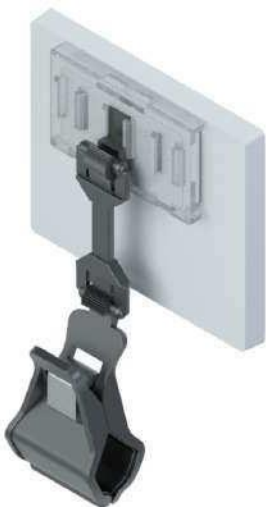
02805-05 With 35mm rod



02810-00 With 60mm rod



02810-05 With 60mm rod





UNICLIPPER® MODEL GRIPPER WITH ROTATING AND ADJUSTABLE ROD

CODE	LABELS	ROD LENGTH (MM)	COLOR	MATERIAL
02815-00	Can be attached to all supports of the program.	100	Transparent	Polycarbonate
02820-00		150	Transparent	Polycarbonate

Box units: 20
Minimum order: 1 box.

02815-00 ROD 100MM

02820-00 ROD 150MM

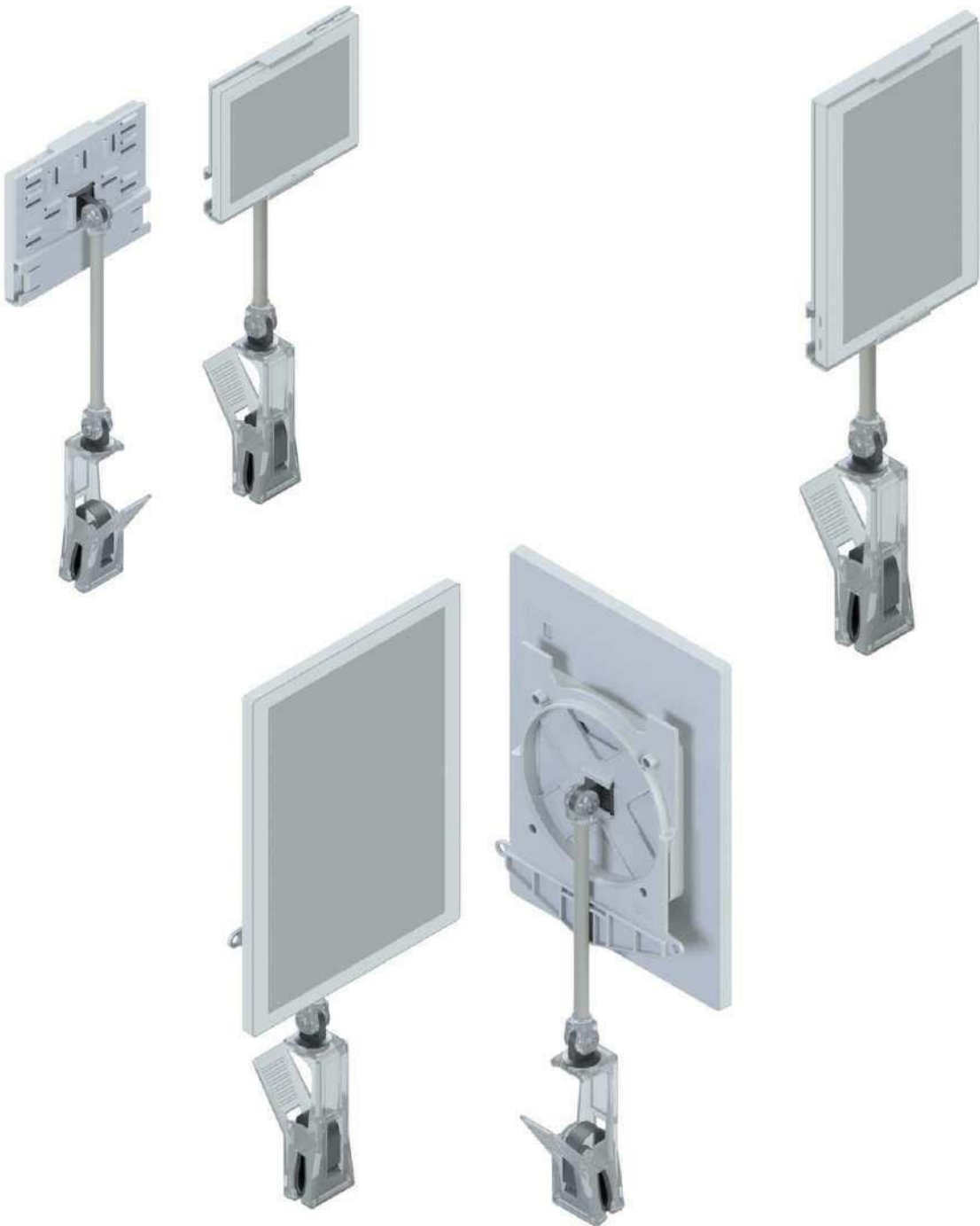


UNICLIPPER® MODEL GRIPPER WITH ROTATING AND ADJUSTABLE TUBE WITH DEVICE FOR SUPPORTS WITH INSERTS

CODE	LABELS	TUBE LENGTH (MM)	COLOR	MATERIAL
02825-00	Can be attached to all supports of the program.	150	Transparent	Polycarbonate

Box units: 10
Minimum order: 1 box.

02825-00 APLICATION





GRIPPER FOR BOXES AND BASKETS
UP TO 15 MM THICK SWIVELING WITH
DOUBLE CONNECTION RODS

CODE	LABELS	ROD LENGTH (MM)	COLOR	MATERIAL
02830-05	Can be attached to all supports of the program.	60	Black	ABS
02835-05		120		ABS

Box units: 20
Minimum order: 1 box.

02830-05 ROD 60MM



02835-05 ROD 120MM

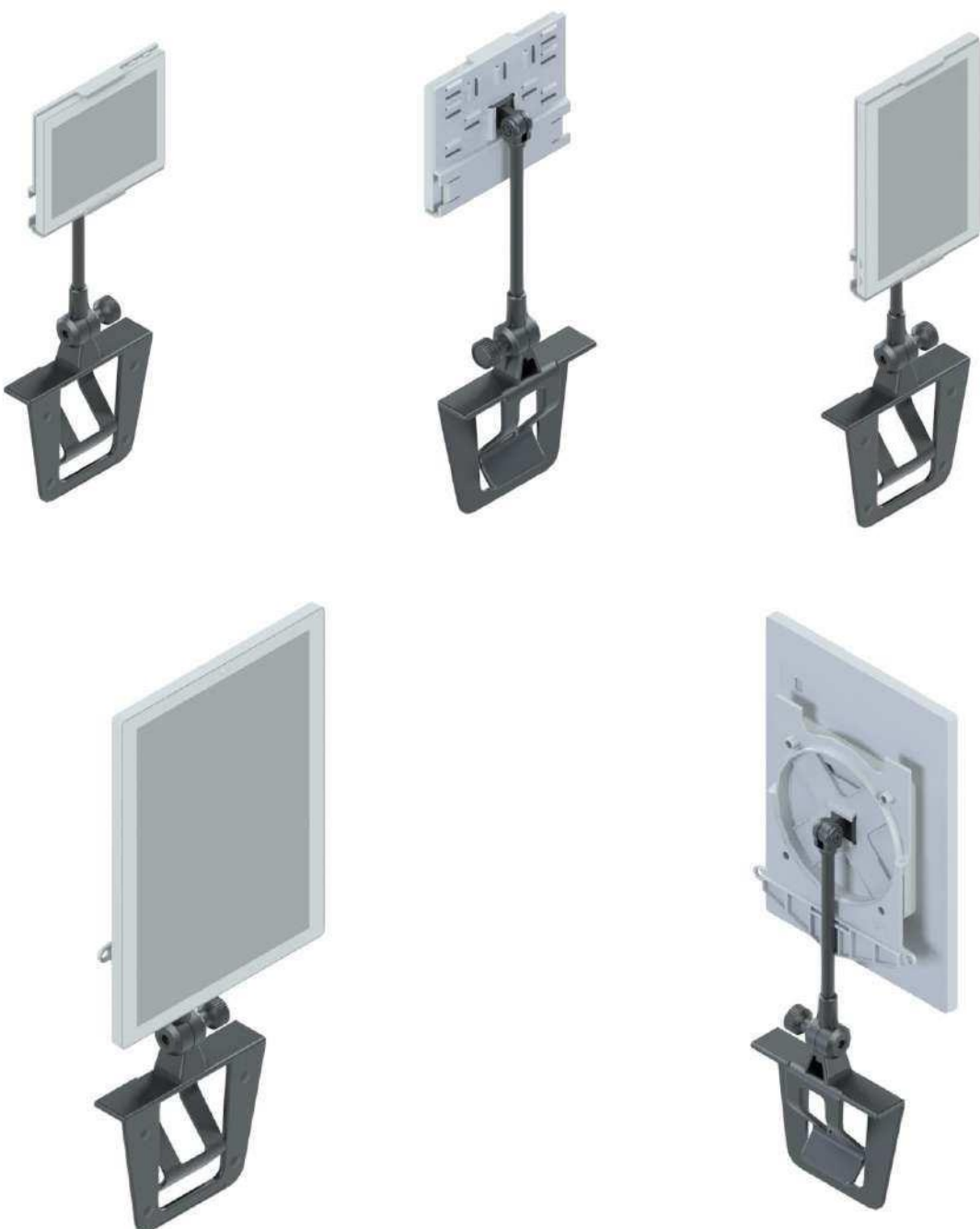


GRIPPER FOR BOXES AND BASKETS
UP TO 15 MM THICK WITH DEVICE
FOR SUPPORTS WITH INSERTS

CODE	LABELS	TUBE LENGTH (MM)	COLOR	MATERIAL
02840-05	Can be attached to all supports of the program.	150	Black	ABS

Box units: 10
Minimum order: 1 box.

02840-05 APLICATION





MAGNUM MODEL TELESCOPIC TUBE WITH EXTENDABLE BAR from 1000 to 1900 MM

CODE	LABELS	HEIGHT MIN./MAX (MM)	COLOR	MATERIAL
02900-08	11.6	1000 / 1900	Anodized	Aluminum

Box units: 5
Minimum order: 1 box.

02900-08

MAGNUM 02630-08 TELESCOPIC TUBE APPLICATION WITH SUPPORT 02062-08 FOR SOLUM 11.6 LABELS



NEMO MODEL TELESCOPIC TUBE WITH EXTENDABLE BAR AND DEVICE FOR INSERTS



CODE	LABELS	HEIGHT MIN./MAX. (MM)	COLOR	MATERIAL
02905-08	Can be attached to all the supports of the program.	300 / 510	Anodized	Aluminum

Box units: 5
Minimum order: 1 box.

METAL BASES FOR NEMO TELESCOPIC TUBE

CODE	DIMENTIONS	COLOR	MATERIAL
02940-08	160x200	RAL 9006	Metal
02945-08	Ø 240	RAL 9006	Metal

Box units: 10
Minimum order: 1 box.

TUBE 02635-08 WITH BASE 02640-08

TUBE 02635-08 WITH BASE 02645-08



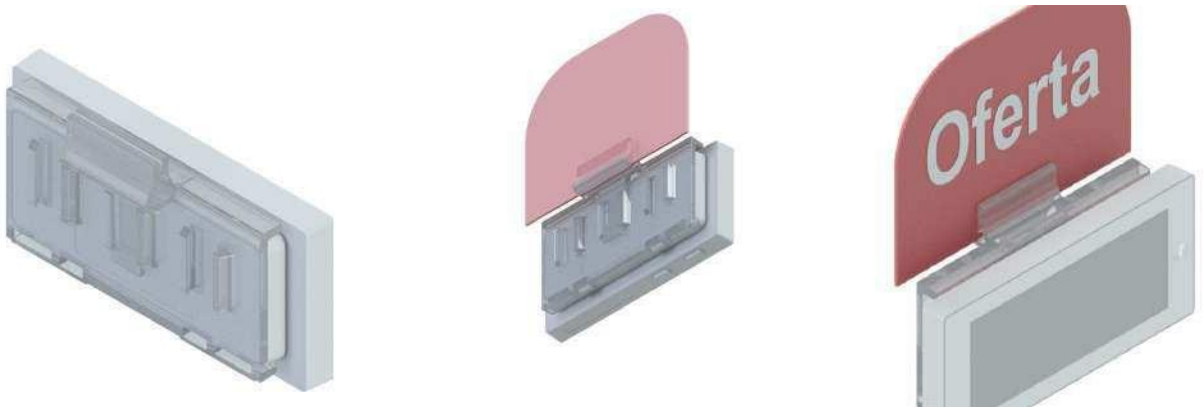
PROMO SYSTEM



We can produce

any promotional supplement in size, shape, colors and with adapted design to your bussines electronic labels.
Highlight your sales, promotions, product eatures and everythig you want to get your coustomer's attention.

APPLICATION IN ALL SMALL SUPPORTS



APPLICATION IN THE ESL SOLUM 4.2 (STANDARD SIZE SUPPORT)



APPLICATION IN THE ESL SOLUM 6.0 (STANDARD SIZE SUPPORT)



APPLICATION IN THE ESL SOLUM 7.5 (STANDARD SIZE SUPPORT)



APPLICATION IN THE ESL SOLUM 11.6



contact us

 www.smartdigit.pt

 info@smartdigit.pt

 [+351 211 165 222](tel:+351211165222)



 SMARTDIGIT